

THIS MAP WAS PREPARED FOR ASSESSMENT PURPOSE ONLY.

SE 1/4 NE 1/4 SEC. 11 T.23S. R.10W.W.M.
DOUGLAS COUNTY

REVISED ON
9-23-92

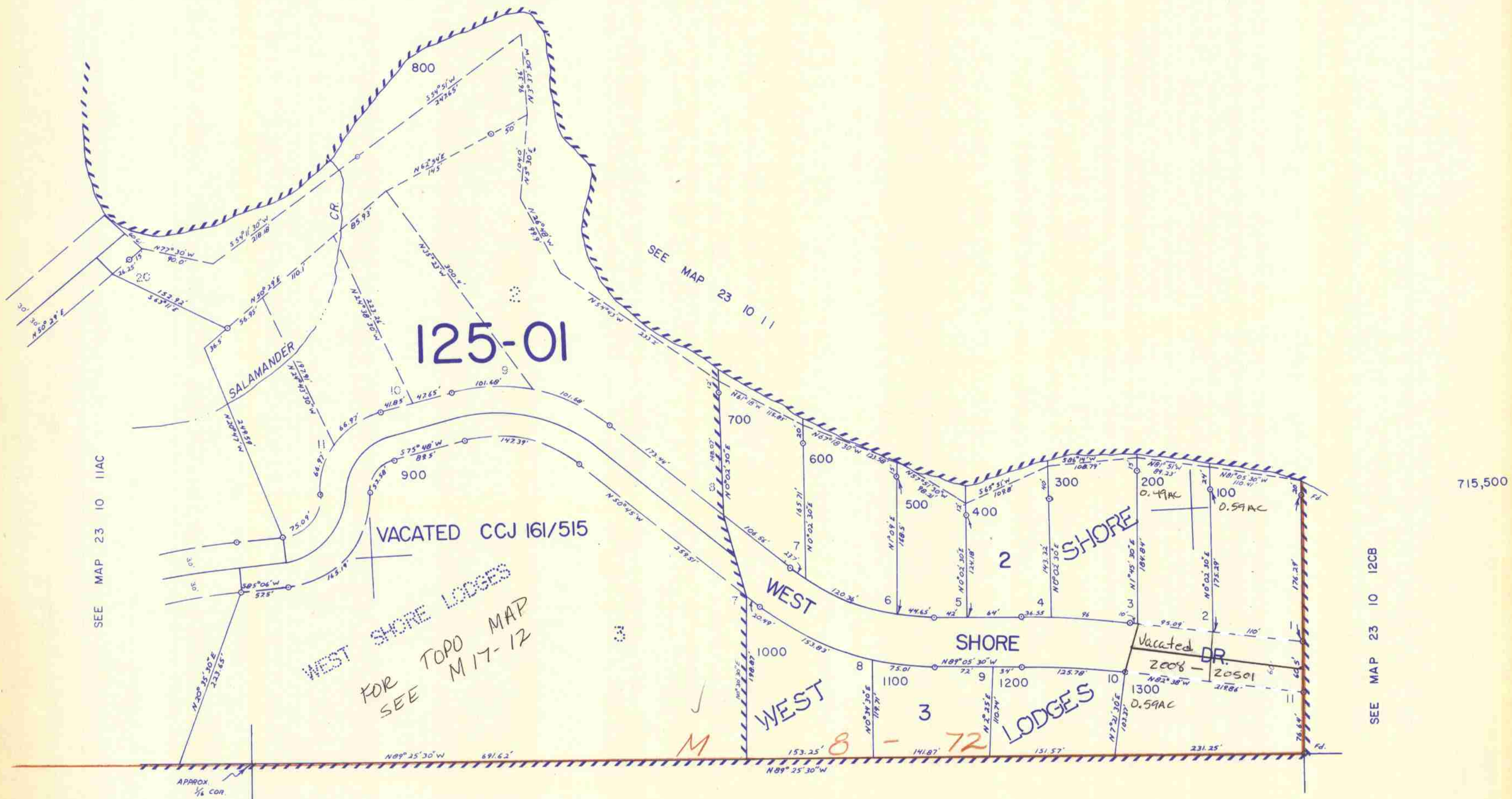
23 10 11AD

1" = 100'

APPROX.
1/8 COR.

APPROX.
1/8 COR.

LOON LAKE



SEE MAP 23 10 11AC

SEE MAP 23 10 12CB

SEE MAP 23 10 11

1,116,000

23 10 11AD

9192
9/10/02
JHP