

THIS MAP WAS PREPARED FOR
ASSESSMENT PURPOSE ONLY.

SEC.18 T.23S. R.9W. W.M.
DOUGLAS COUNTY

1" = 400'

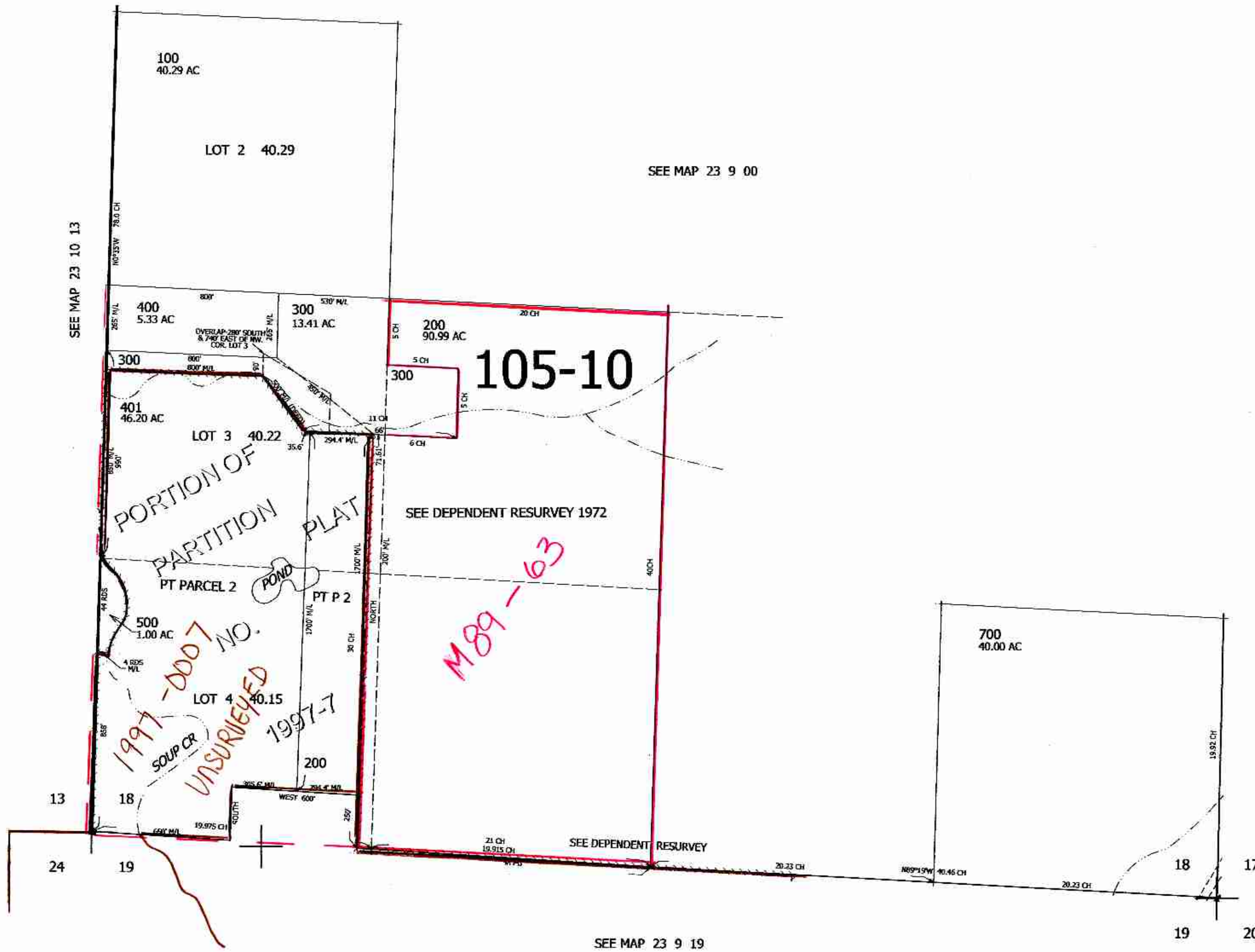
REVISED ON
11-24-21

23 9 18

CANCELLED NOS
402 404 600
406 601 403
405 407 408
409

12 7
13 18

7 8
18 17



SEE MAP 23 9 00

707,000
4,048,000
142021

23 9 18