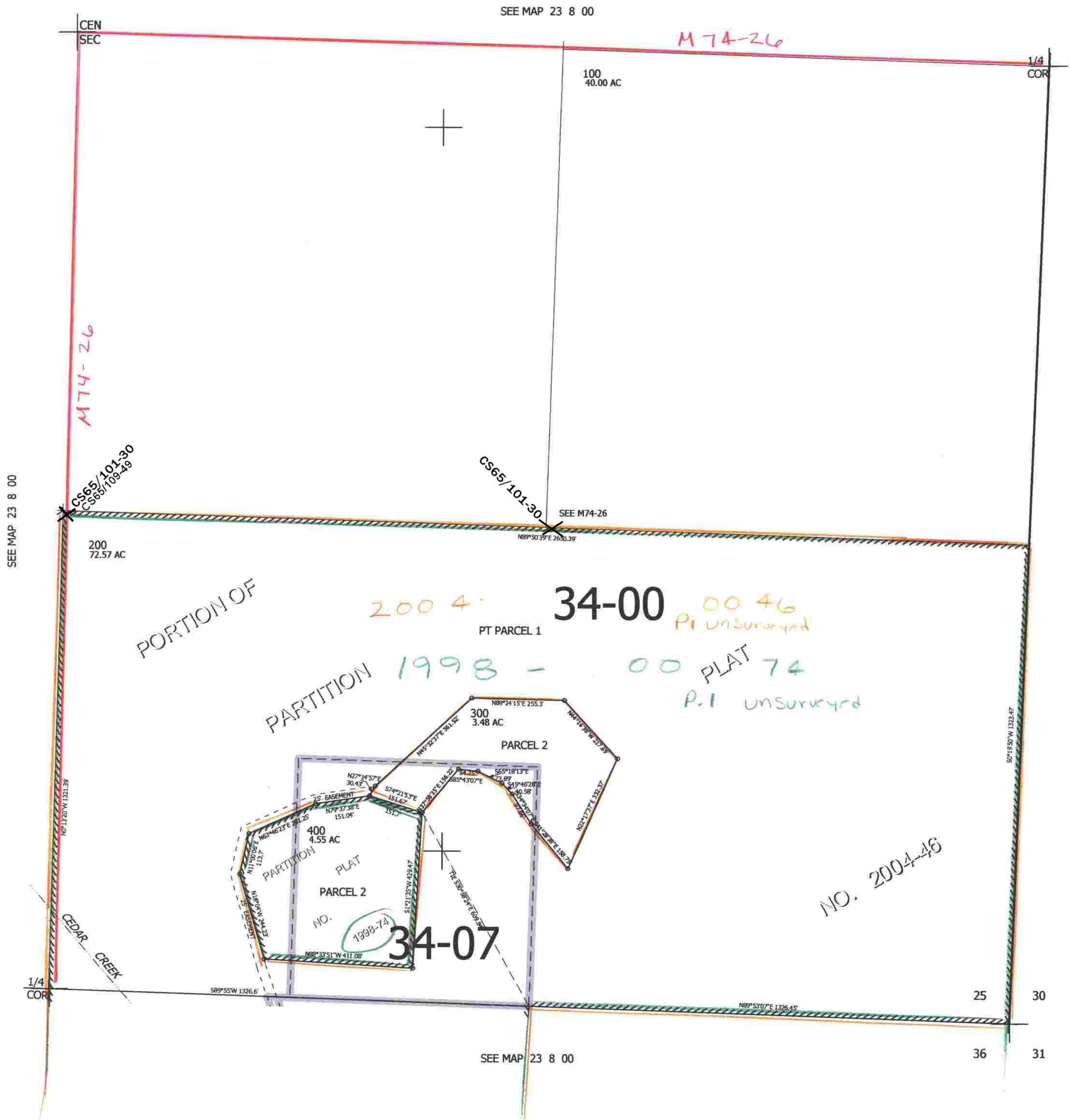


THIS MAP WAS PREPARED FOR ASSESSMENT PURPOSE ONLY.

SE1/4 SEC.25 T.23S. R.8W. W.M.  
DOUGLAS COUNTY  
1" = 200'

REVISED ON  
8-17-04

23 8 25D



CANCELLED NOS

SEE MAP 23 7 30

8-2004  
JC  
23 8 25D