

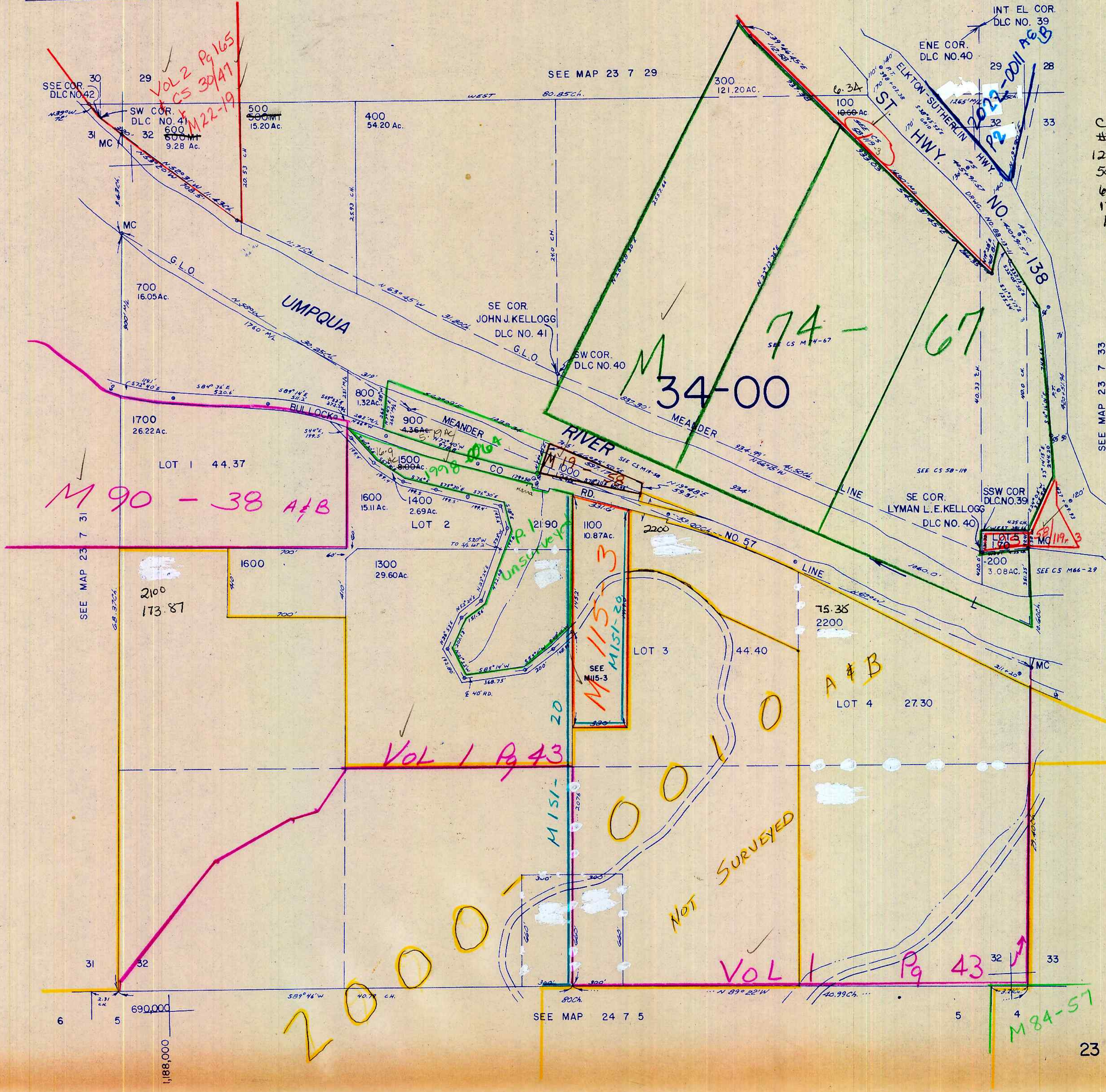
SECTION 32 T.23 S. R. 7 W. W.M.  
DOUGLAS COUNTY

REVISED ON  
3-17-95

23 7 32

THIS MAP WAS PREPARED FOR  
ASSESSMENT PURPOSE ONLY.

1" = 400'



Cancelled  
 #5  
 1200  
 500 H1  
 600 H1  
 1700 H1  
 1800  
 1900  
 2000  
 2300  
 2101  
 101

SEE MAP 23 7 33

23 7 32

AP 4/15/95