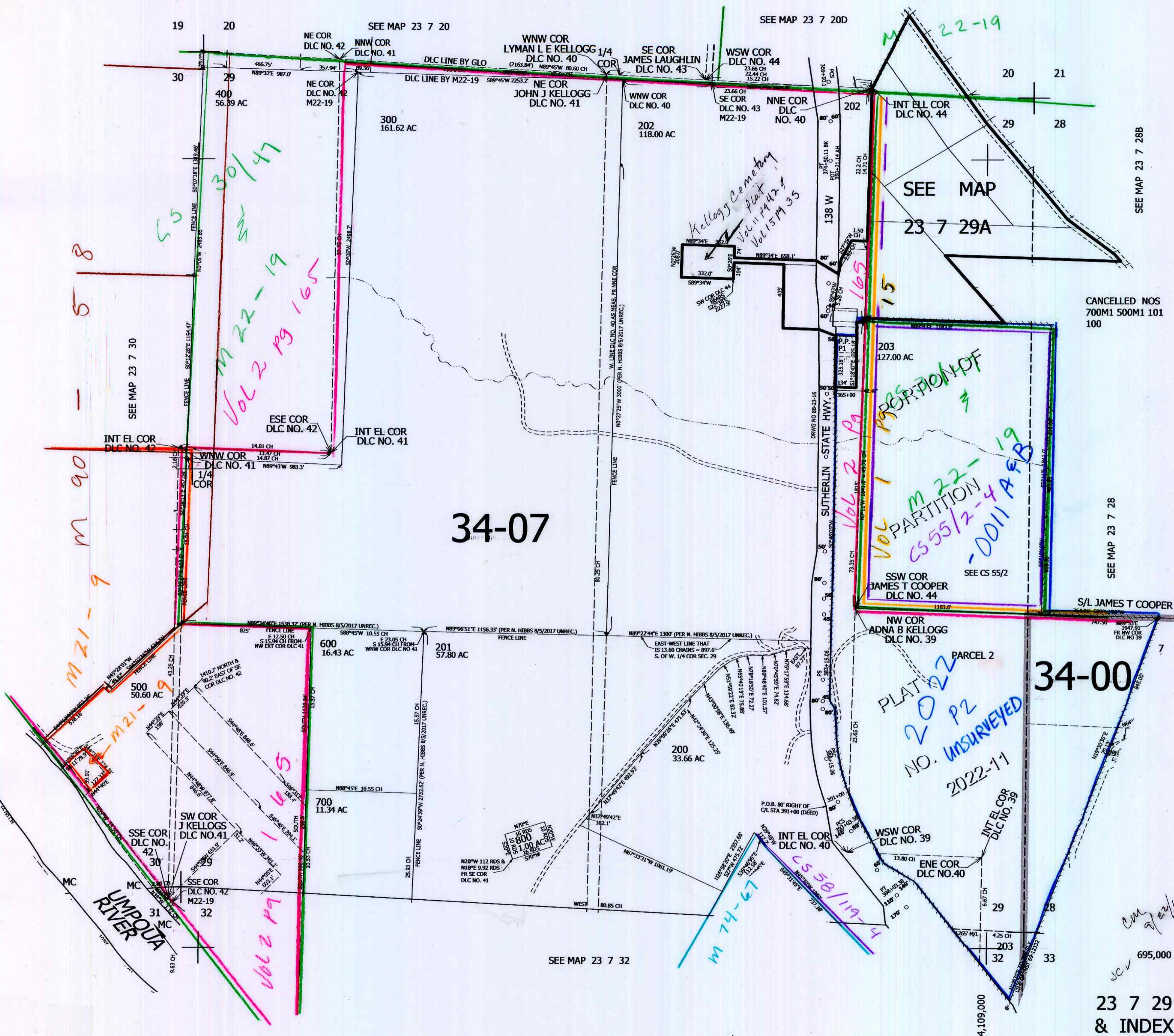


THIS MAP WAS PREPARED FOR ASSESSMENT PURPOSE ONLY.

SEC.29 T.23S. R.7W. W.M. DOUGLAS COUNTY 1" 400'

REVISED ON 3-2-22

23 7 29 & INDEX



SEE MAP 23 7 28B

CANCELLED NOS 700M1 500M1 101 100

SEE MAP 23 7 28

695,000

23 7 29 & INDEX

Handwritten notes: 'see 2/21/17', 'see', and '4,109,000'.