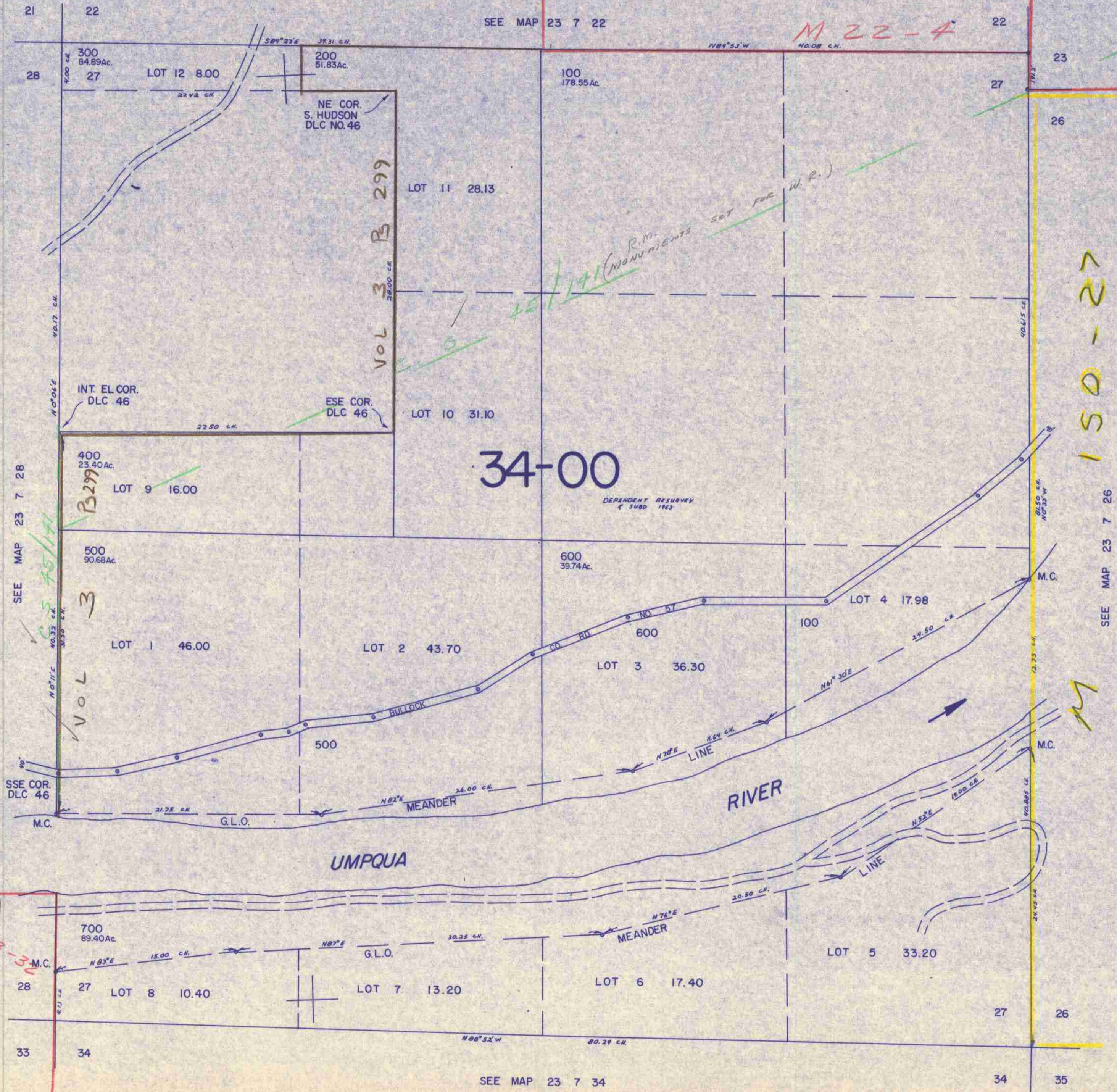


THIS MAP WAS PREPARED FOR ASSESSMENT PURPOSE ONLY.

SECTION 27 T.23S. R. 7 W. W.M.
DOUGLAS COUNTY

23 7 27

1" = 400'



SEE MAP 23 7 22

M 22-4

34-00

150-27

M 38-32

SEE MAP 23 7 34

23 7 27

695,000

1,205,000

10/27/88