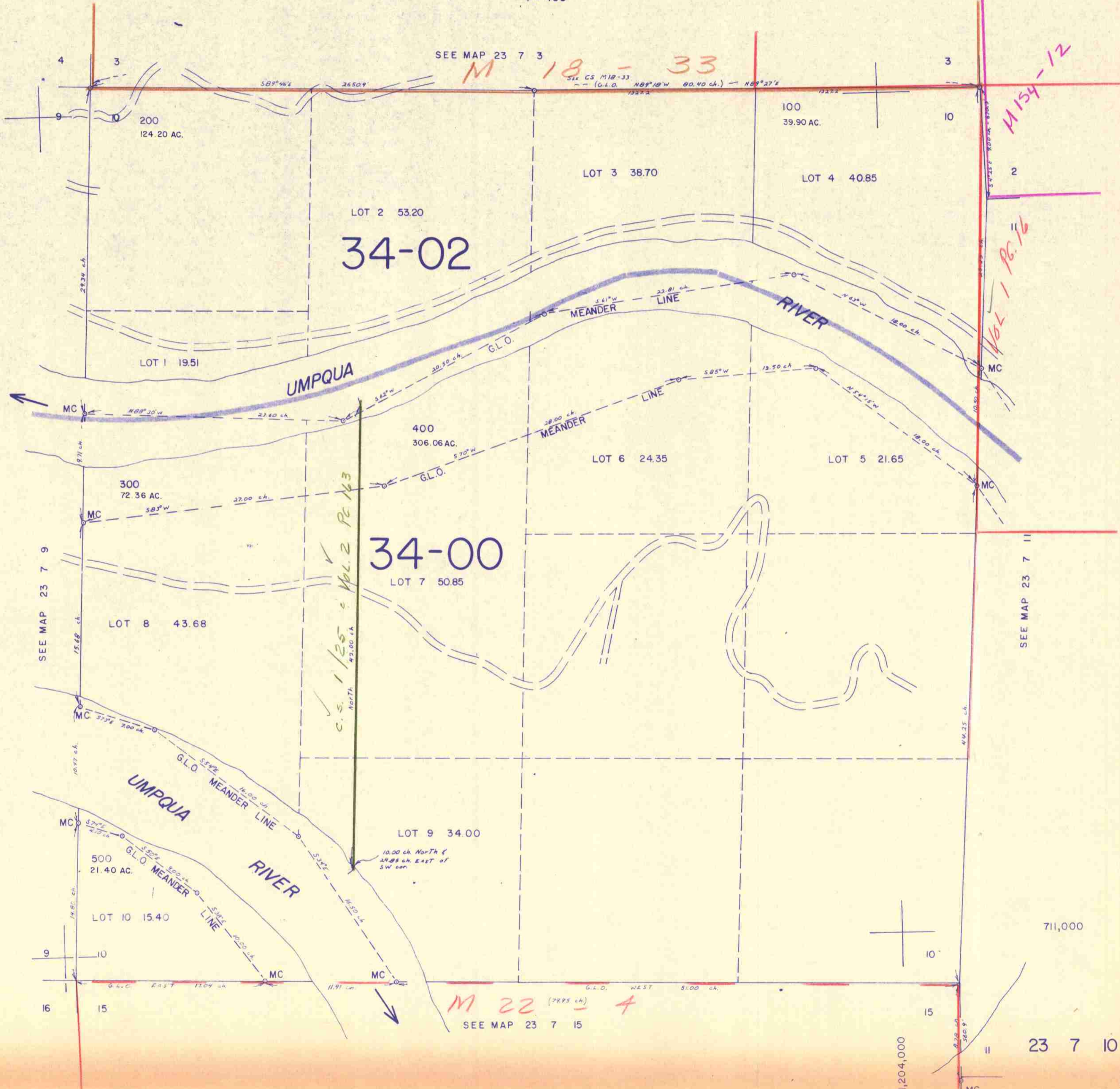


THIS MAP WAS PREPARED FOR ASSESSMENT PURPOSE ONLY.

SECTION 10 T.23S. R. 7W. W.M.
DOUGLAS COUNTY

23 7 10

1" = 400'



SEE MAP 23 7 3

M 18 - 33

M 154 - 12

Vol. 1 Pg. 16

34-00

M 22 (7895 ch) - 4

SEE MAP 23 7 15

711,000

23 7 10

1,204,000

9/8