

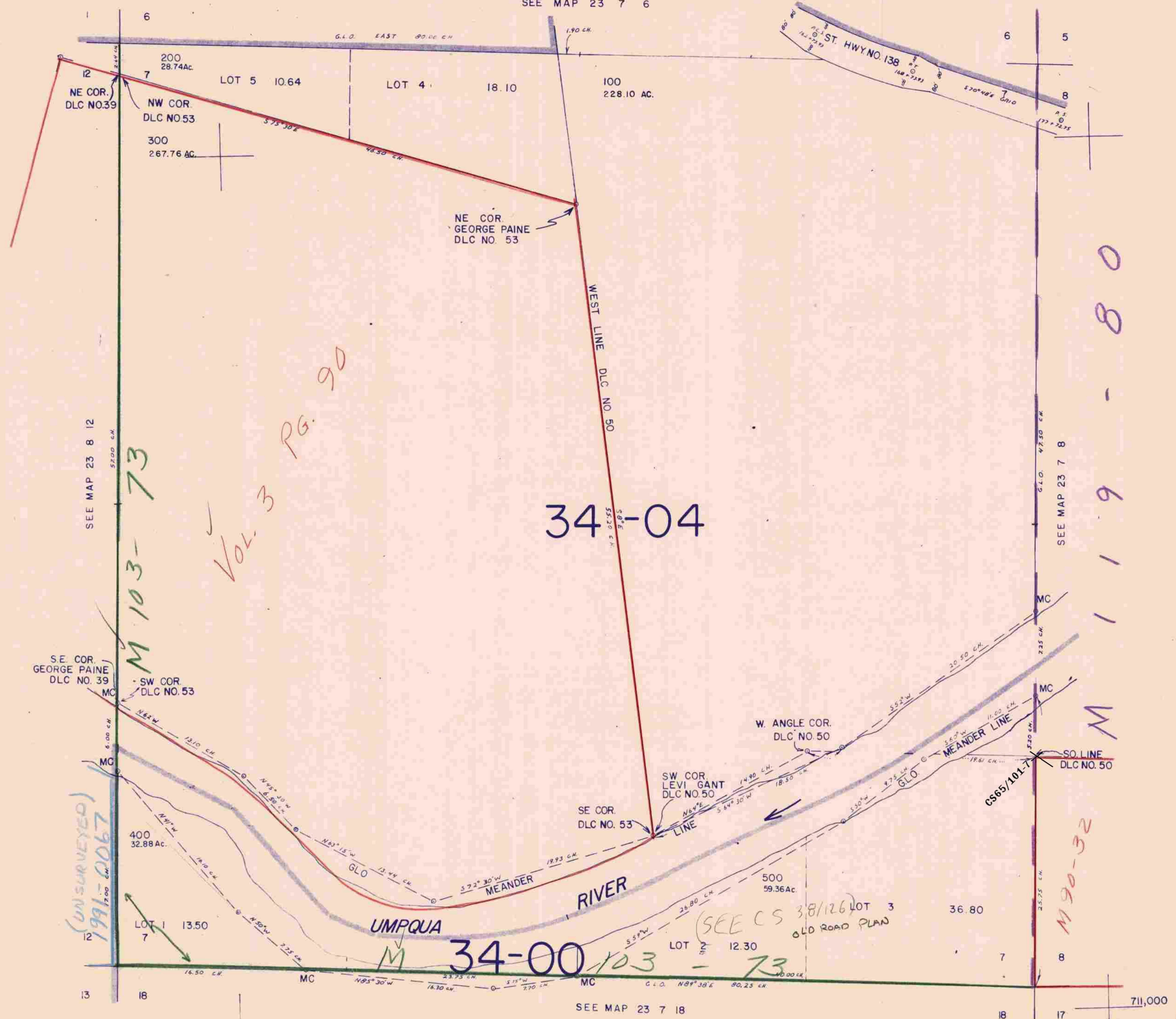
THIS MAP WAS PREPARED FOR ASSESSMENT PURPOSE ONLY.

SECTION 7 T.23 S. R. 7 W. W.M. DOUGLAS COUNTY

23 7 7

1" = 400'

SEE MAP 23 7 6



SEE MAP 23 8 12

SEE MAP 23 7 8

34-04

34-00

SEE MAP 23 7 18

23 07 7

1,189,000

7/13/78