

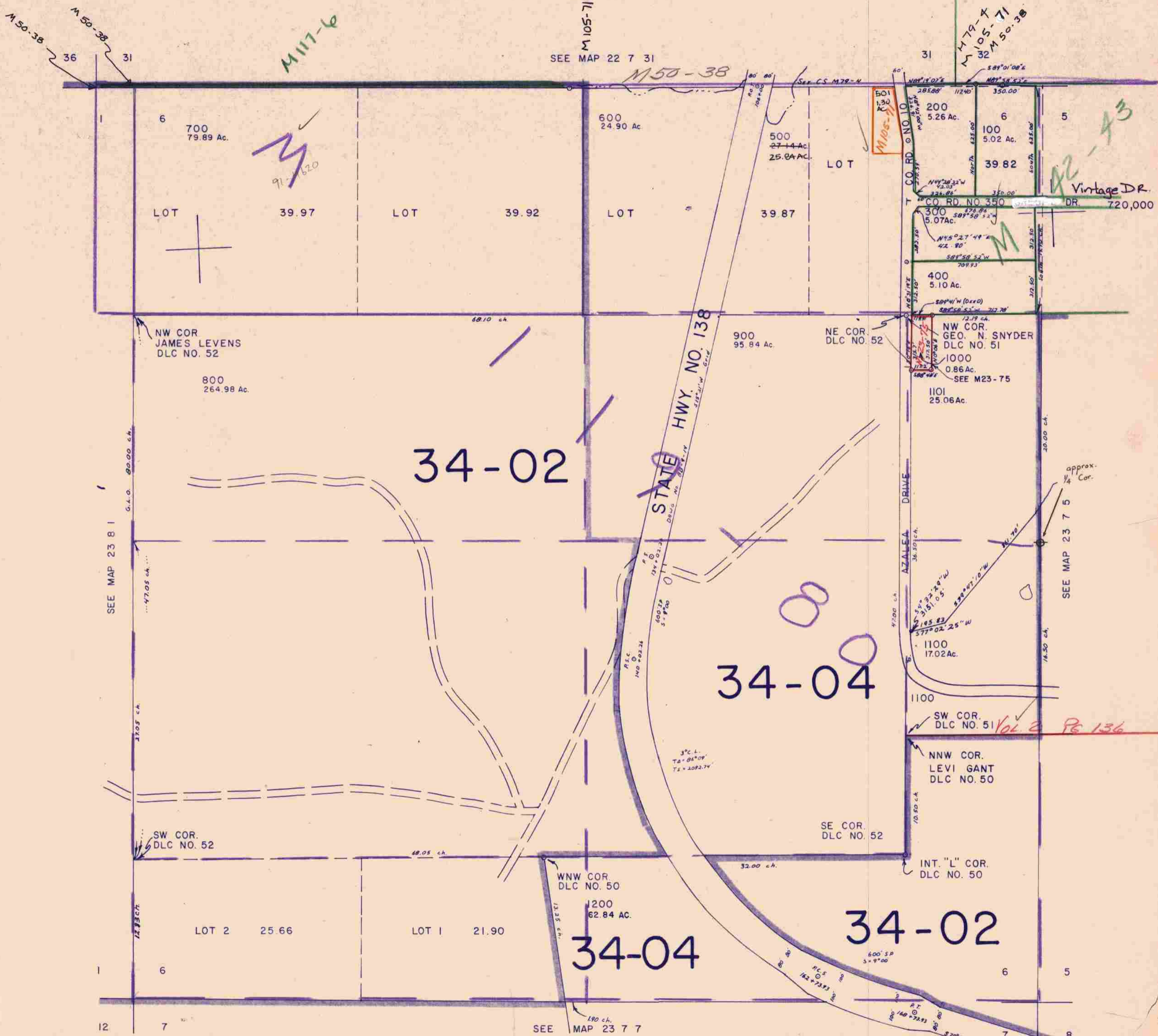
THIS MAP WAS PREPARED FOR ASSESSMENT PURPOSE ONLY.

SECTION 6 T.23S. R.7W. W.M. DOUGLAS COUNTY

23 7 6

1" = 400'

M 105-71
SEE MAP 22 7 31



34-02

34-04

34-04

34-02

1,185,000

23 7 6

9/10/23