

THIS MAP WAS PREPARED FOR
ASSESSMENT PURPOSE ONLY.

SECTION 2 T.23S. R.7W. W.M.
DOUGLAS COUNTY

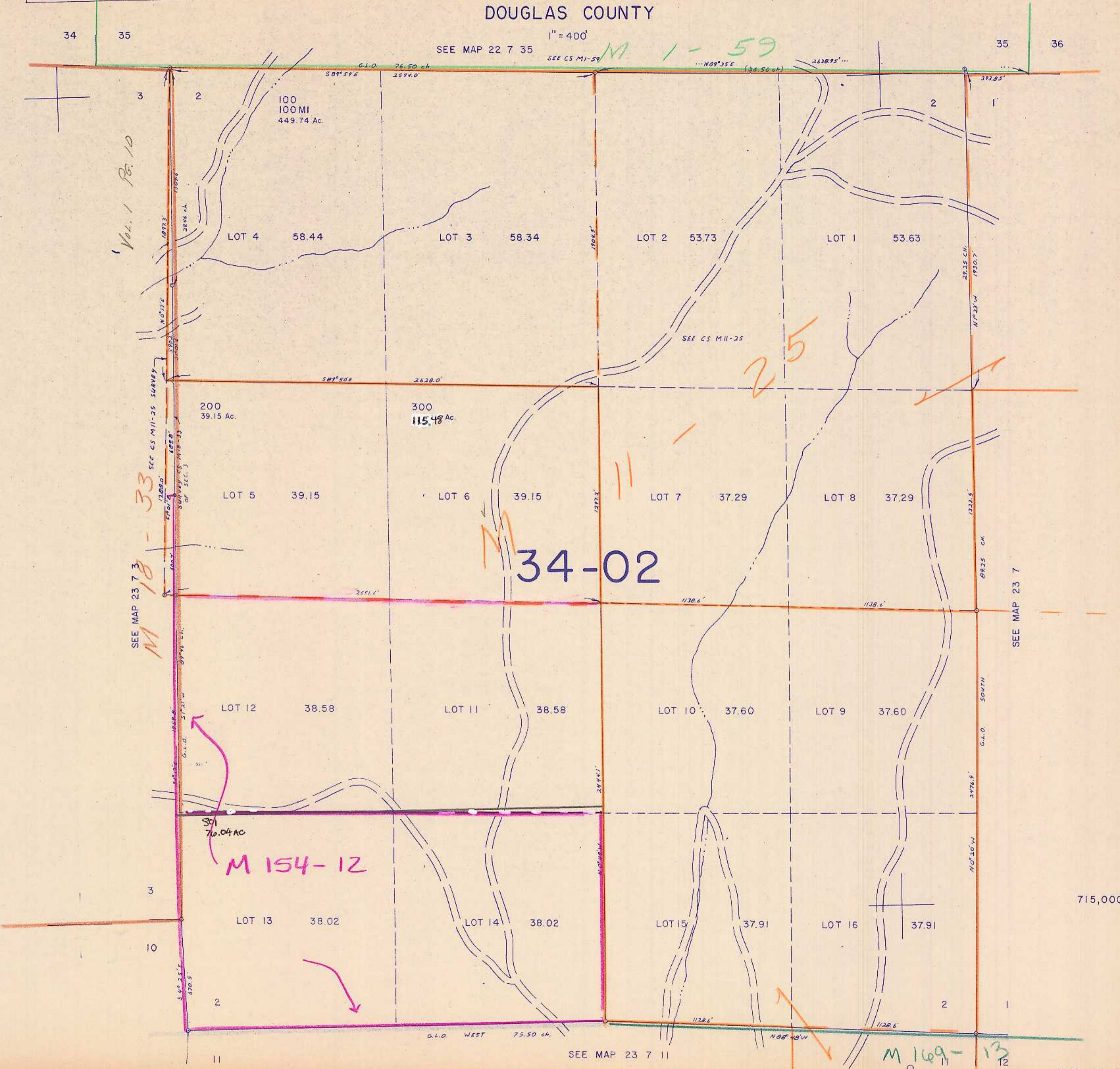
23 7 2

1" = 400'

SEE MAP 22 7 35

SEE CS M1-59

M 1-59



Vol. 1 Pg. 10

SEE MAP 23 7 3
M 18-33

M 154-12

M 34-02

M 169-13

1,209,000

23 7 2

9/8/28