

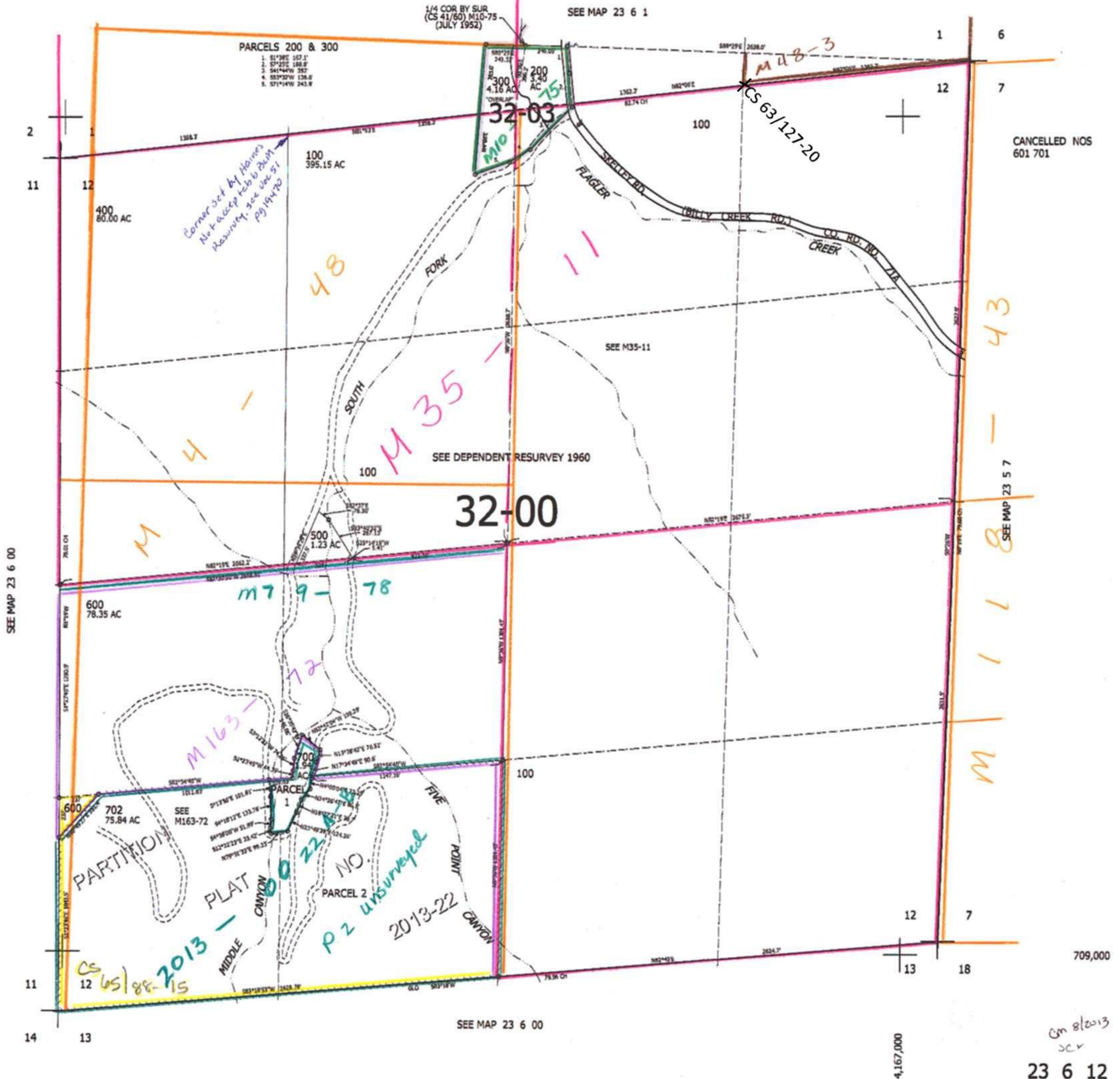
THIS MAP WAS PREPARED FOR ASSESSMENT PURPOSE ONLY.

SEC.12 T.23S. R.6W. W.M.
DOUGLAS COUNTY

REVISED ON
7-2-13

23 6 12

1" = 400'



SEE MAP 23 6 00

SEE MAP 23 6 00

4,167,000

709,000

On 8/20/13
scr

23 6 12