

THIS MAP WAS PREPARED FOR ASSESSMENT PURPOSE ONLY.

SECTION 2 T.23S. R.6 W. W.M.

23 6 2

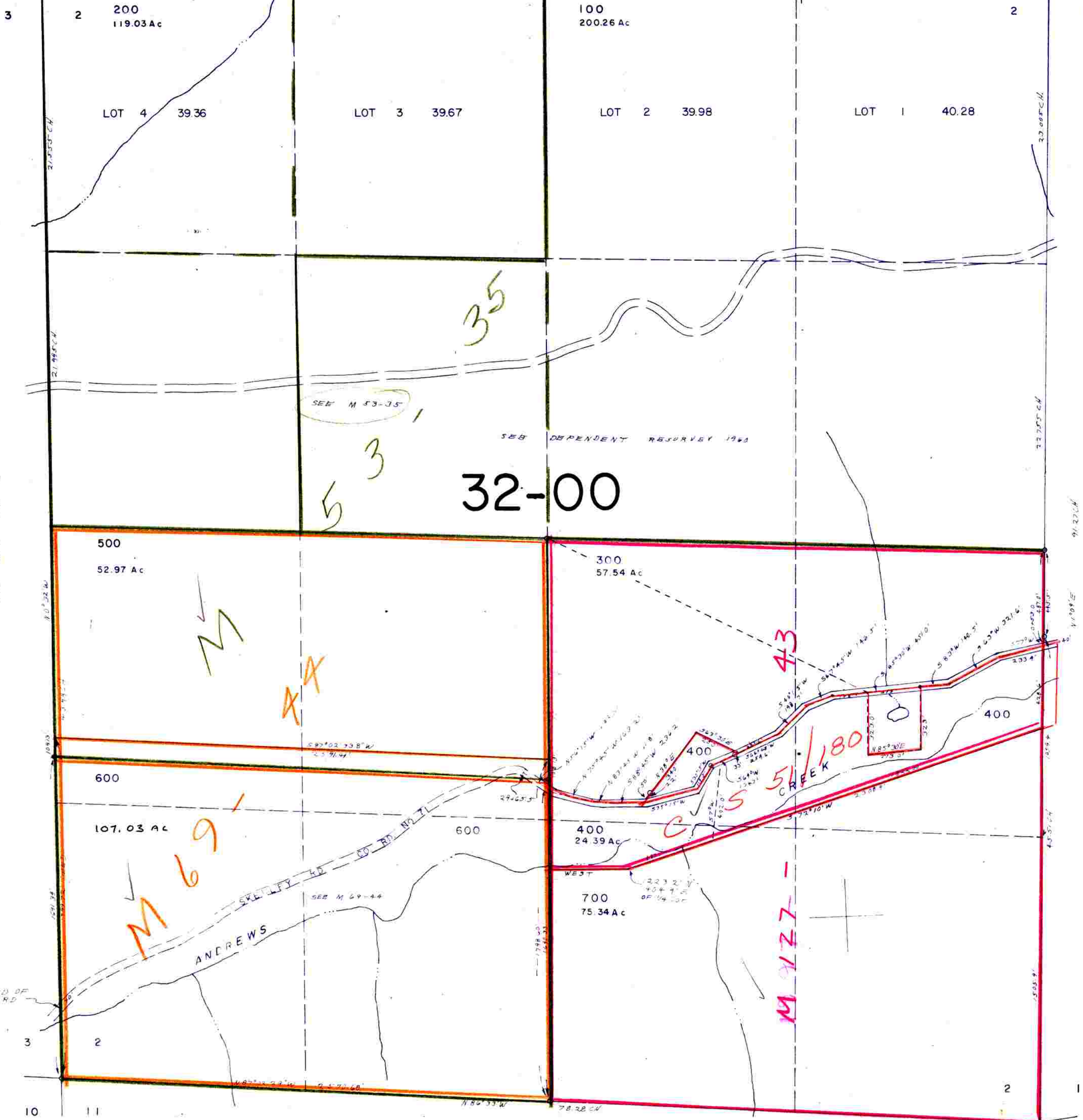
SEE MAP 22 6. DOUGLAS COUNTY

1" = 400'

34 35

35 36

M 120-79



CANCELLED NO'S
300 MI 500 MI 600 MI
700 MI

32-00

SEE MAP 23 6

SEE MAP 23 6 1

SEE MAP 23 6

23 6 2

9/83 JH