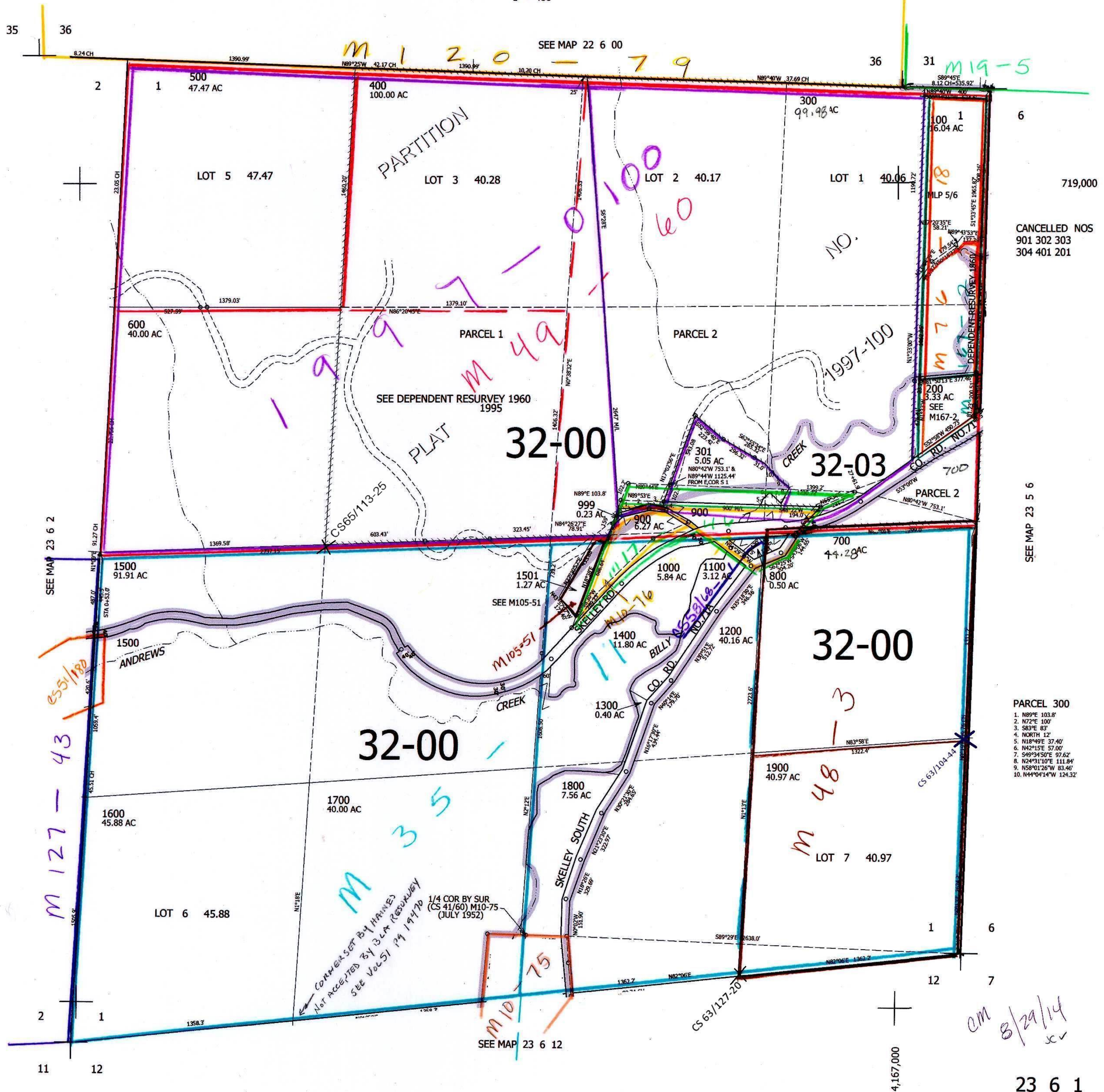


THIS MAP WAS PREPARED FOR ASSESSMENT PURPOSE ONLY.

SEC.1 T.23S. R.6W. W.M.
DOUGLAS COUNTY
1" = 400'

REVISED ON
9-9-15

23 6 1



CANCELLED NOS
901 302 303
304 401 201

- PARCEL 300
1. N89°E 103.8'
 2. N72°E 100'
 3. S83°E 83'
 4. NORTH 12'
 5. N18°49'E 37.40'
 6. N42°15'E 57.00'
 7. S49°34'50"E 97.62'
 8. N24°31'10"E 111.84'
 9. N58°01'26"W 83.46'
 10. N44°04'14"W 124.32'

am 8/29/14
cv

23 6 1