

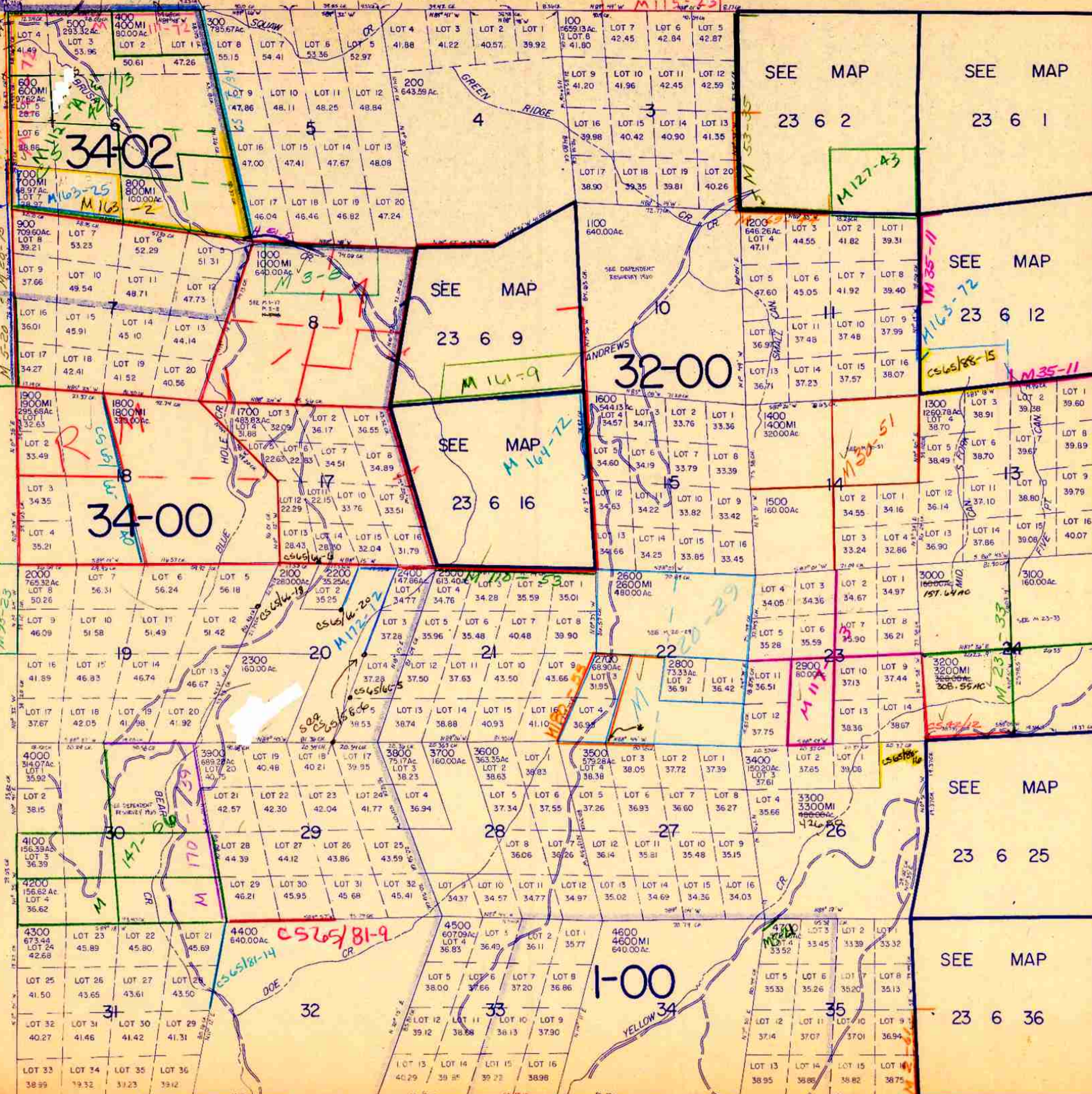
THIS MAP WAS PREPARED FOR
ASSESSMENT PURPOSE ONLY.

T.23S. R. 6 W. W.M.
DOUGLAS COUNTY

SEE MAP 22 6

1" = 2000'

M 115-23



* THE BLM RESURVEY 1986-1995
DID NOT ACCEPT THE POSITION OF
HANDS W/1/2. SEE Vol. 51 Pg. 19488

M 185-5A-D

M 169-17
SEE MAP 24 6

M 140-13

9/10/21