

THIS MAP WAS PREPARED FOR ASSESSMENT PURPOSE ONLY.

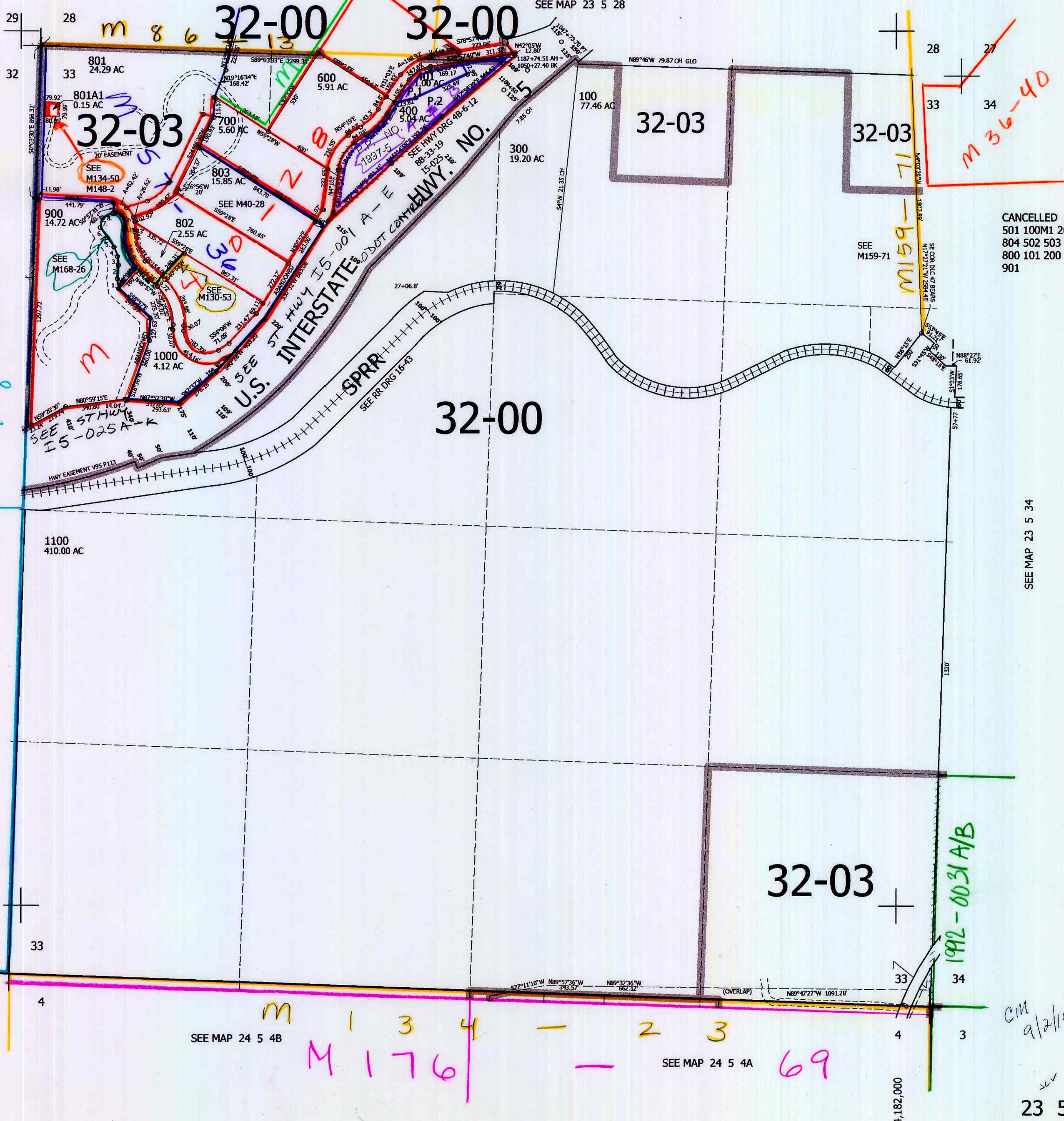
SEC.33 T.23S. R.5W. W.M. DOUGLAS COUNTY

REVISED ON 8-11-14

23 5 33

1" = 400'

SEE MAP 23 5 28



TAXLOT 802
 1. N9°44'56"W 55.83'
 2. N3°02'13"E 78.96'
 3. N5°06'07"W 49.6'
 4. N22°24'05"W 57.59'
 5. N38°31'43"W 68.56'
 6. N35°50'20"W 67.65'
 7. N11°49'35"E 57.57'
 8. N63°33'59"E 63.92'

CANCELLED NOS
 501 100M1 200M1
 804 502 503 500
 800 101 200
 901

SEE MAP 23 5 32D

SEE MAP 23 5 34

SEE MAP 24 5 4B

SEE MAP 24 5 4A

688,000

cm 9/2/14

23 5 33