

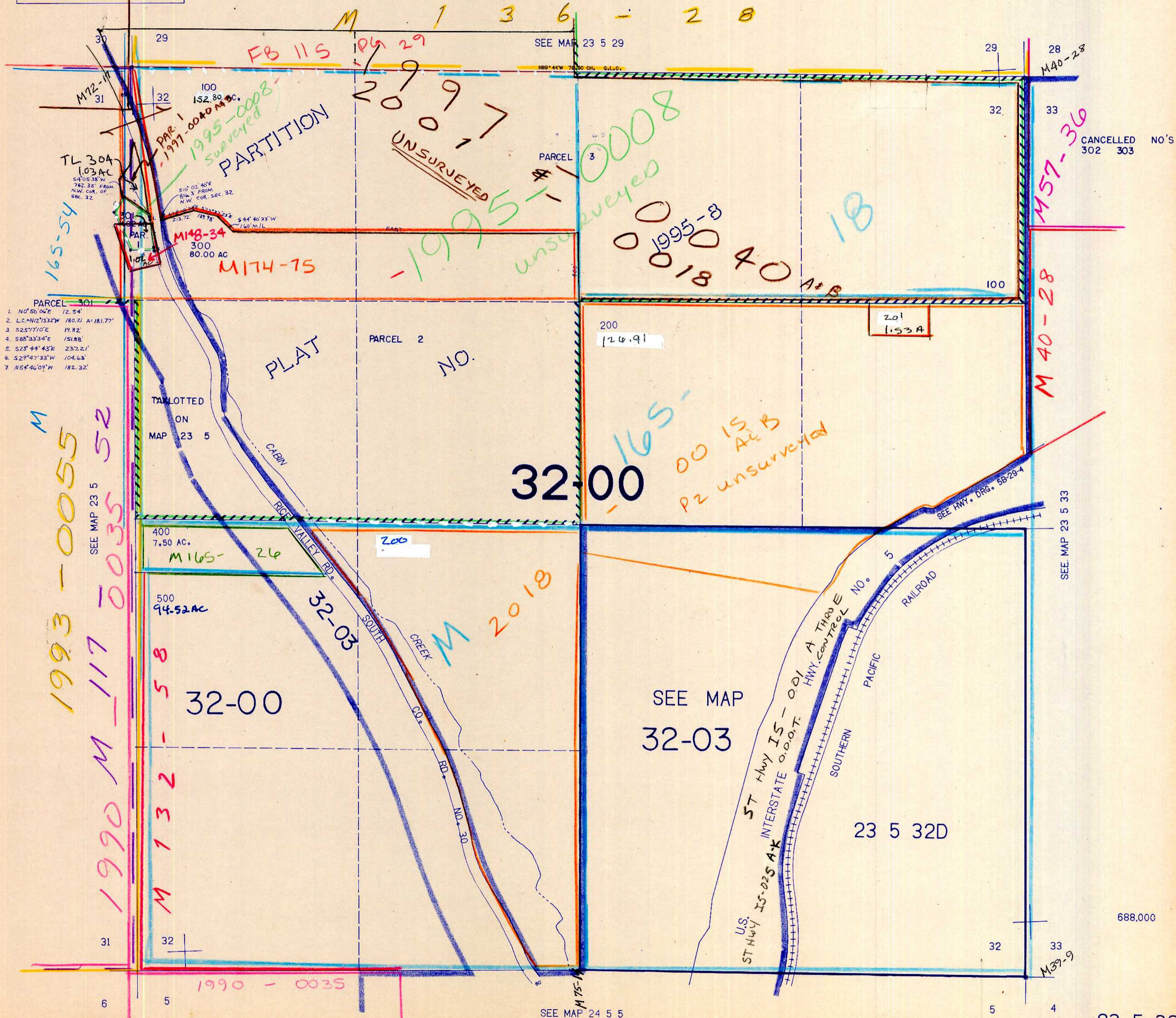
SECTION 32 T.23S. R.5W. W.M.
DOUGLAS COUNTY

REVISED ON
1-30-95

23 5 32
& INDEX

THIS MAP WAS PREPARED FOR
ASSESSMENT PURPOSE ONLY.

1"=400'



CANCELLED NO'S
302 303

23 5 32
& INDEX

205 BC