

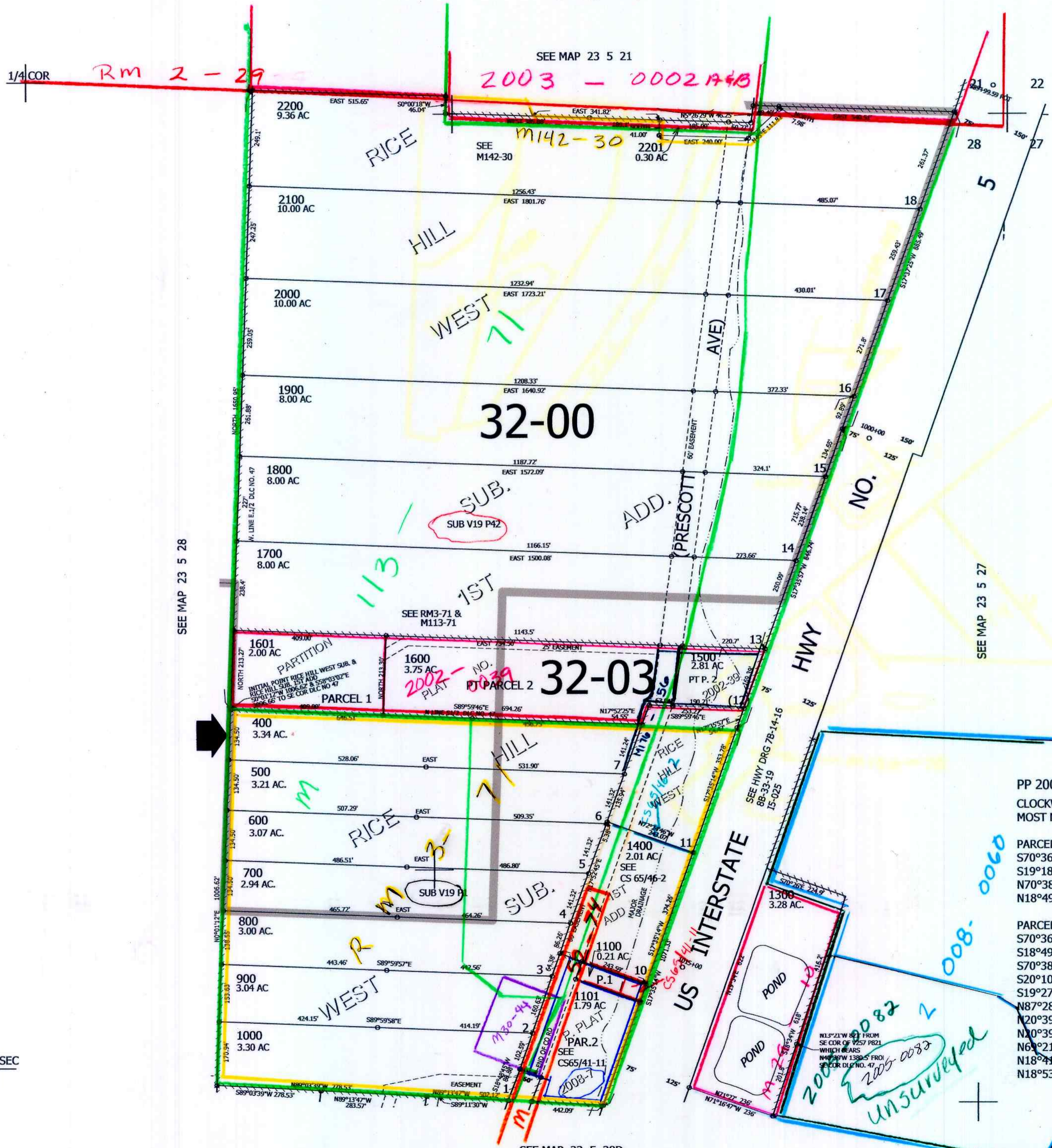
THIS MAP WAS PREPARED FOR ASSESSMENT PURPOSE ONLY.

NE1/4 SEC.28 T.23S. R.5W. W.M.
DOUGLAS COUNTY

REVISED ON
4-11-19

23 5 28A

1" = 200'



SEE MAP 23 5 21

2003 - 0002 A+B

M142-30

32-00

32-03

1100

1101

SEE MAP 23 5 28D

CANCELLED NOS
998 100 101
102 200 300
999 103 997
1201 1200 1100A1
1602

PP 2008-7
CLOCKWISE, BEGINNING AT THE
MOST NORTHERLY CORNER OF:

PARCEL 1
S70°36'55"E 188.52'
S19°18'41"W 49.94'
N70°38'03"W 183.09'
N18°49'01"E 50.00'

PARCEL 2
S70°36'55"E 59.96'
S18°49'01"W 50.00'
S70°38'03"E 183.09'
S20°10'24"W 2.95'
S19°27'42"W 290.22'
N87°28'13"W 189.64'
N20°39'31"E 69.28'
N20°39'31"E 1.95'
N69°21'21"W 60.00'
N18°41'52"E 102.86'
N18°53'13"E 224.73'

UNSURVEYED
2008-0082
2005-0083

4,183,000
cm
4/11/08

23 5 28A