

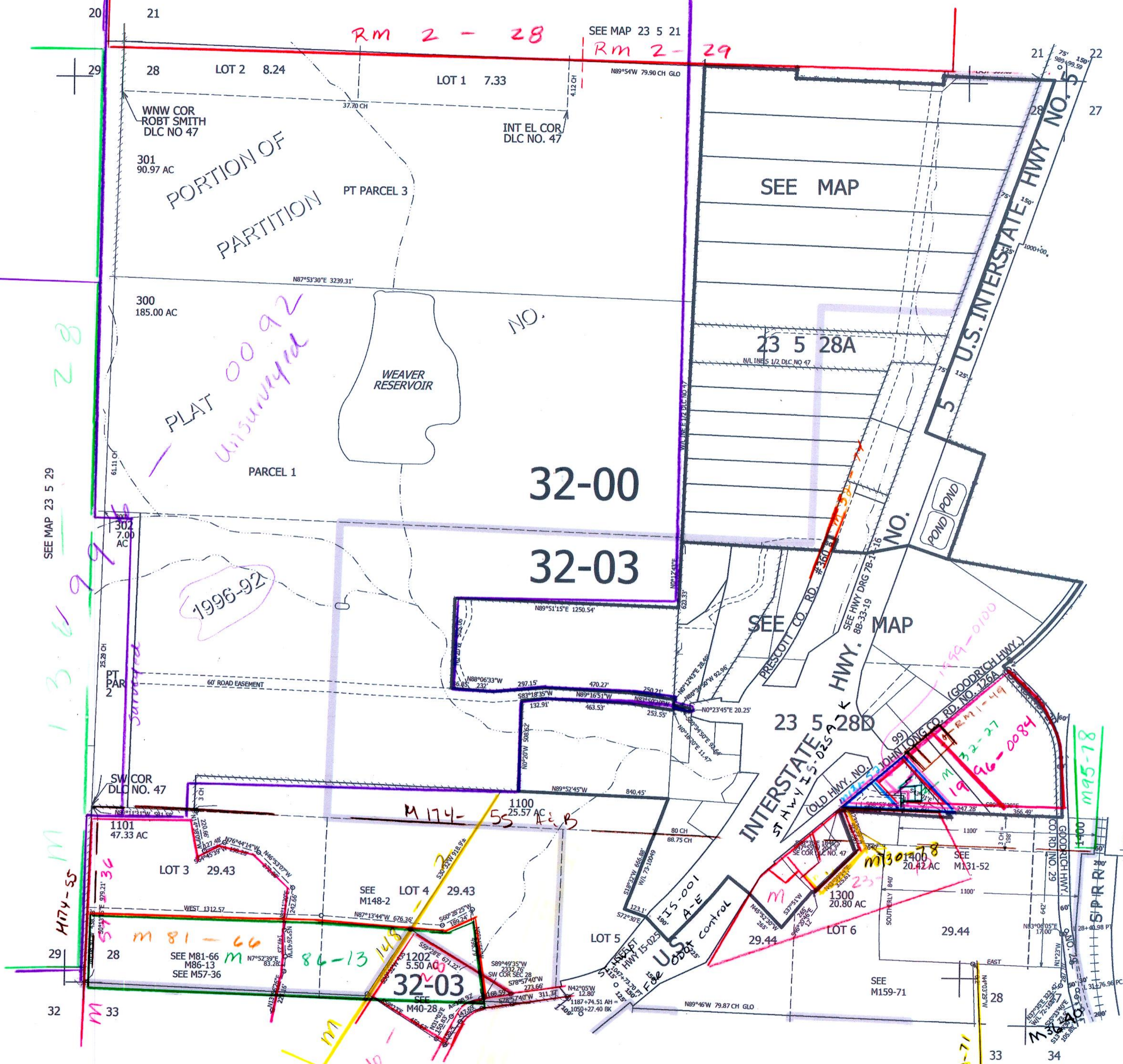
THIS MAP WAS PREPARED FOR ASSESSMENT PURPOSE ONLY.

SEC.28 T.23S. R.5W. W.M.  
DOUGLAS COUNTY

1" = 400'

REVISED ON  
4-8-13

23 5 28  
& INDEX



CANCELLED NOS  
 1000A1 1201 100  
 1001 400 500  
 600 700 800  
 900 200 1300M1  
 1401 1402 1301  
 1004 1002 1003  
 1000 1203 1102  
 1200 1103 1204  
 1302

SEE MAP 23 5 27

SEE COR  
DLC NO 47

693,000

CM  
9/9/08  
CV

23 5 28  
& INDEX

SEE MAP 23 5 29

SEE MAP 23 5 33

M159-71  
4,182,000

M174-55  
M174-36  
M81-66  
M86-13  
M57-36  
M148-2  
M40-28  
M40-13  
M40-14  
M40-15  
M40-16  
M40-17  
M40-18  
M40-19  
M40-20  
M40-21  
M40-22  
M40-23  
M40-24  
M40-25  
M40-26  
M40-27  
M40-28  
M40-29  
M40-30  
M40-31  
M40-32  
M40-33  
M40-34  
M40-35  
M40-36  
M40-37  
M40-38  
M40-39  
M40-40  
M40-41  
M40-42  
M40-43  
M40-44  
M40-45  
M40-46  
M40-47  
M40-48  
M40-49  
M40-50  
M40-51  
M40-52  
M40-53  
M40-54  
M40-55  
M40-56  
M40-57  
M40-58  
M40-59  
M40-60  
M40-61  
M40-62  
M40-63  
M40-64  
M40-65  
M40-66  
M40-67  
M40-68  
M40-69  
M40-70  
M40-71  
M40-72  
M40-73  
M40-74  
M40-75  
M40-76  
M40-77  
M40-78  
M40-79  
M40-80  
M40-81  
M40-82  
M40-83  
M40-84  
M40-85  
M40-86  
M40-87  
M40-88  
M40-89  
M40-90  
M40-91  
M40-92  
M40-93  
M40-94  
M40-95  
M40-96  
M40-97  
M40-98  
M40-99  
M40-100