

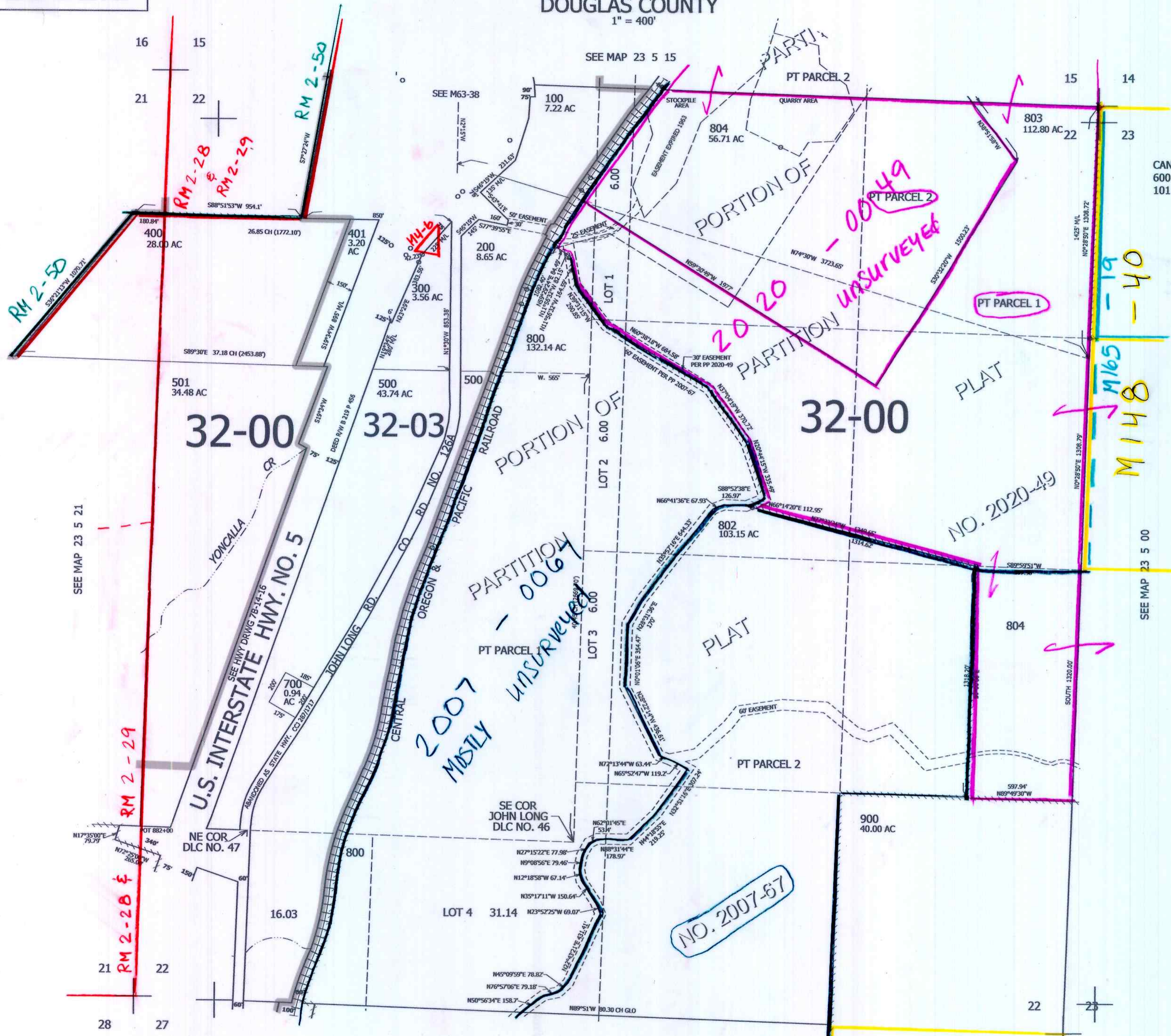
THIS MAP WAS PREPARED FOR ASSESSMENT PURPOSE ONLY.

SEC.22 T.23S. R.5W. W.M.
DOUGLAS COUNTY

REVISED ON
12-18-20

23 5 22

1" = 400'



CANCELLED NOS
600 400M1 401M1
101 502 801

SEE MAP 23 5 21

SEE MAP 23 5 00

SEE MAP 23 5 27

4,183,000

698,000

VOL 1 Pg 31

12/2020 JB

23 5 22