

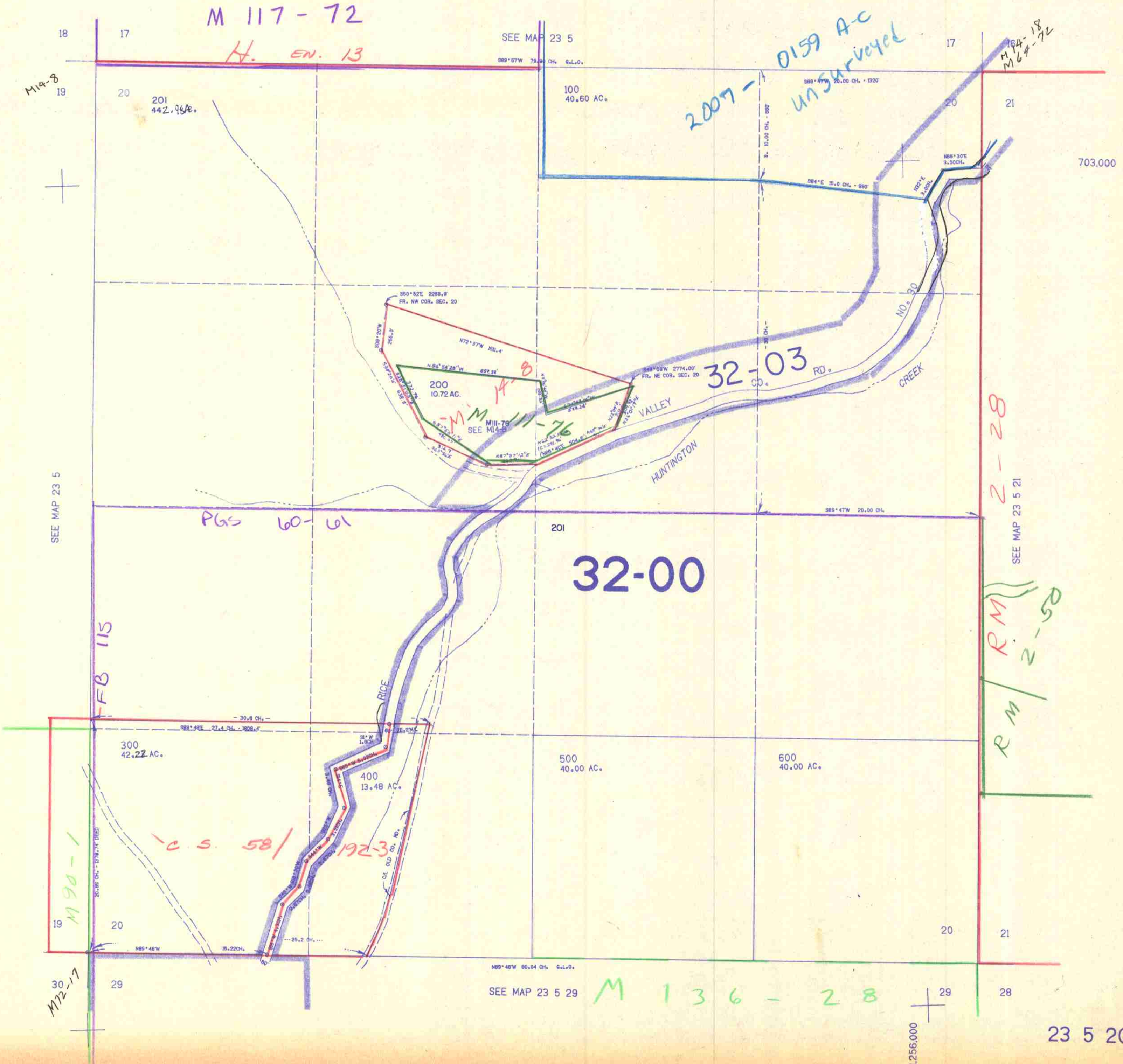
SECTION 20 T.23S. R.5W. W.M.
DOUGLAS COUNTY

REVISED ON
12-30-91

23 5 20

THIS MAP WAS PREPARED FOR
ASSESSMENT PURPOSE ONLY.

1"=400'



M 117-72

H. EN. 13

2007-0159 A-C
UNSURVEYED

2-28

R M / 2-50

32-00

32-03 RD.

F B 115

P 65 60-61

M 90-1

C.S. 58/192-3

M 136-28

23 5 20

12/31/2005