

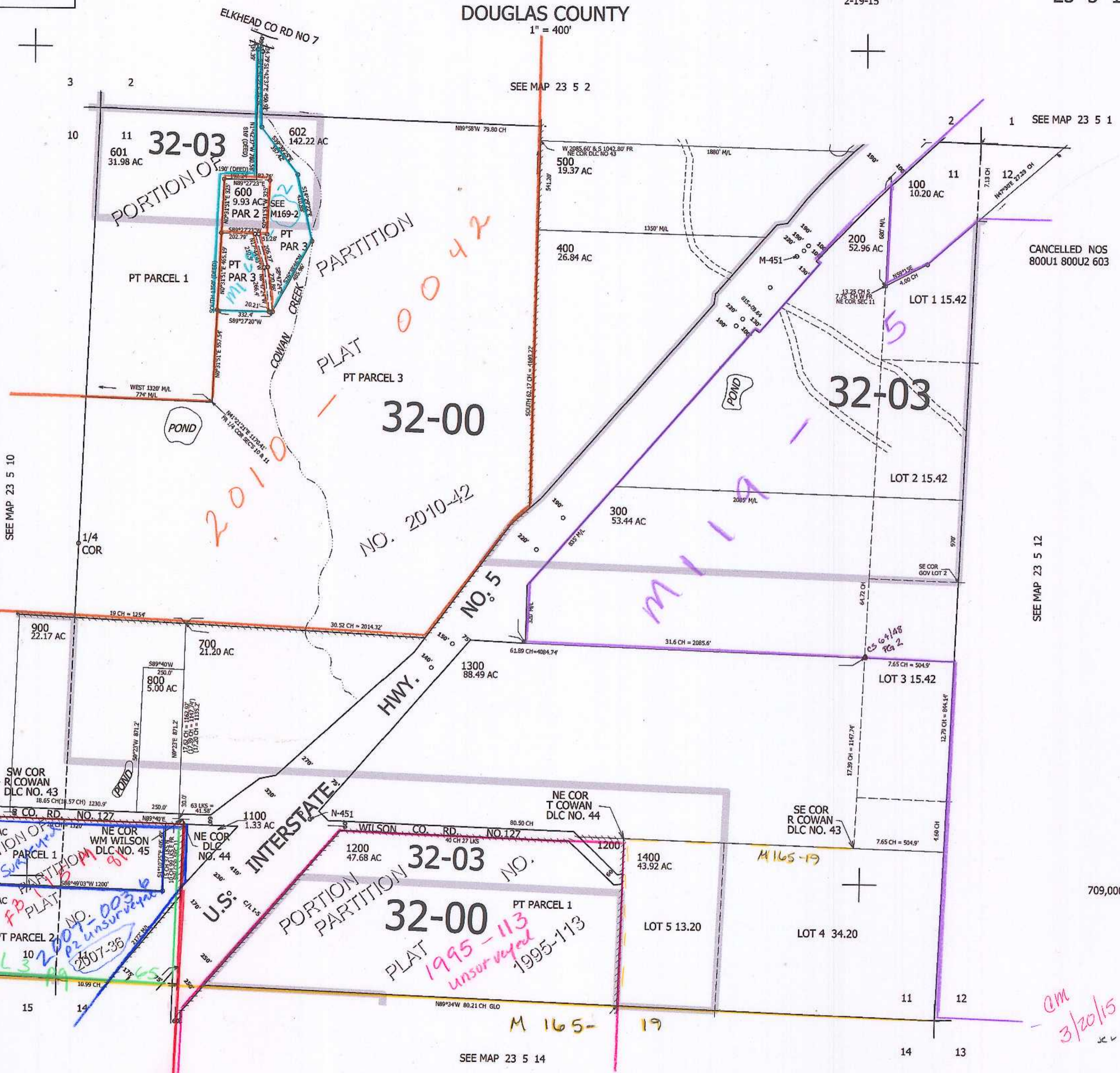
THIS MAP WAS PREPARED FOR ASSESSMENT PURPOSE ONLY.

SEC.11 T.23S. R.5W. W.M. DOUGLAS COUNTY

REVISED ON 2-19-15

23 5 11

1" = 400'



CANCELLED NOS 800U1 800U2 603

SEE MAP 23 5 12

709,000

am 3/20/15

23 5 11

SEE MAP 23 5 14

4,193,000

SEE MAP 23 5 10

SEE MAP 23 5 2

SEE MAP 23 5 1

PORTION OF
 PARCEL 1
 PARTITION
 PLAT
 NO. 2010-42
 SURVEYED
 2007-35
 VOL 32
 1995-113
 1995-113
 UNSURVEYED
 M 165-19

PORTION OF
 PARTITION
 PLAT
 NO. 1995-113
 UNSURVEYED
 1995-113
 M 165-19

M 165-19

NO. 2010-42

NO. 5

HWY. NO. 5

NO. 32-03

NO. 32-00

32-03

32-03

32-00

601
31.98 AC

602
142.22 AC

600
9.93 AC

500
19.37 AC

400
26.84 AC

200
52.96 AC

100
10.20 AC

LOT 1 15.42

LOT 2 15.42

LOT 3 15.42

300
53.44 AC

1300
88.49 AC

900
22.17 AC

700
21.20 AC

800
5.00 AC

1000
11.05 AC

1001
15.51 AC

1100
1.33 AC

1200
47.68 AC

1400
43.92 AC

LOT 5 13.20

LOT 4 34.20

15

14

11

12

14

13

3

2

2

1

11

12

11

12

5

10

11

12

13

14

15

16

17

18

3

2

1

10

9

8

7

6

5

3

2

1

10

9

8

7

6

5