

THIS MAP WAS PREPARED FOR ASSESSMENT PURPOSE ONLY.

Upper Left:
123°17'34"W 43°35'57"N
4181623E 716584N ft

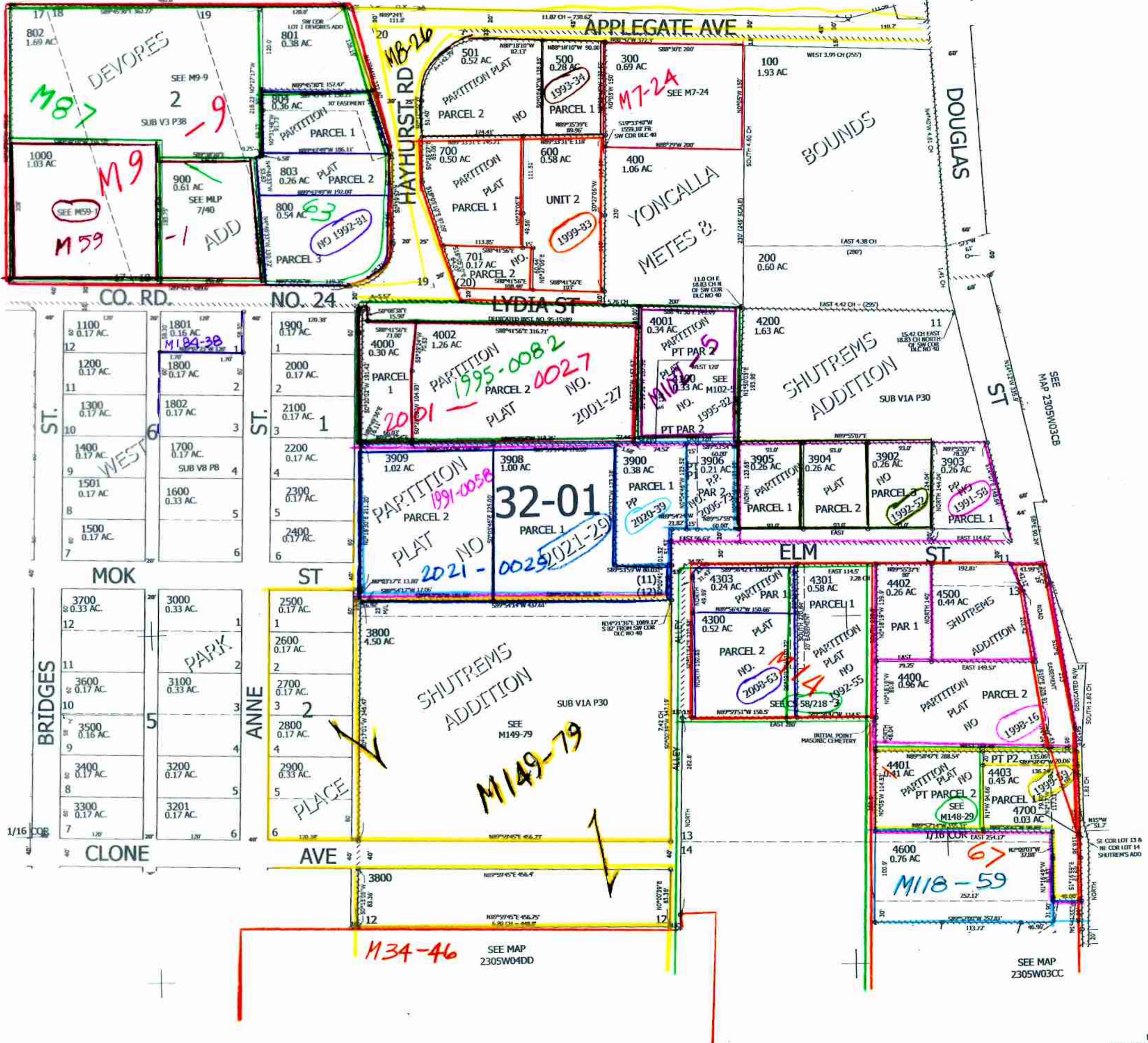
NE1/4 SE1/4 SEC.04 T.23S. R.05W. W.M.
DOUGLAS COUNTY
1" = 100'

Date Exported 2024-11-07

CANCELLED NOS:
601 602 4404
4302 7907 3901

SEE MAP
2305W04

SEE MAP
2305W04AD



SEE MAP
2305W04DB

SEE MAP
2305W03CB

SEE MAP
2305W03CC

11/20/24 B
JCL

230504DA

Lower Right:
123°17'6"W 43°35'40"N
4183600E 714863N ft