

SE1/4 NW1/4 SEC. 3 T.23S. R.5W. W.M.
DOUGLAS COUNTY

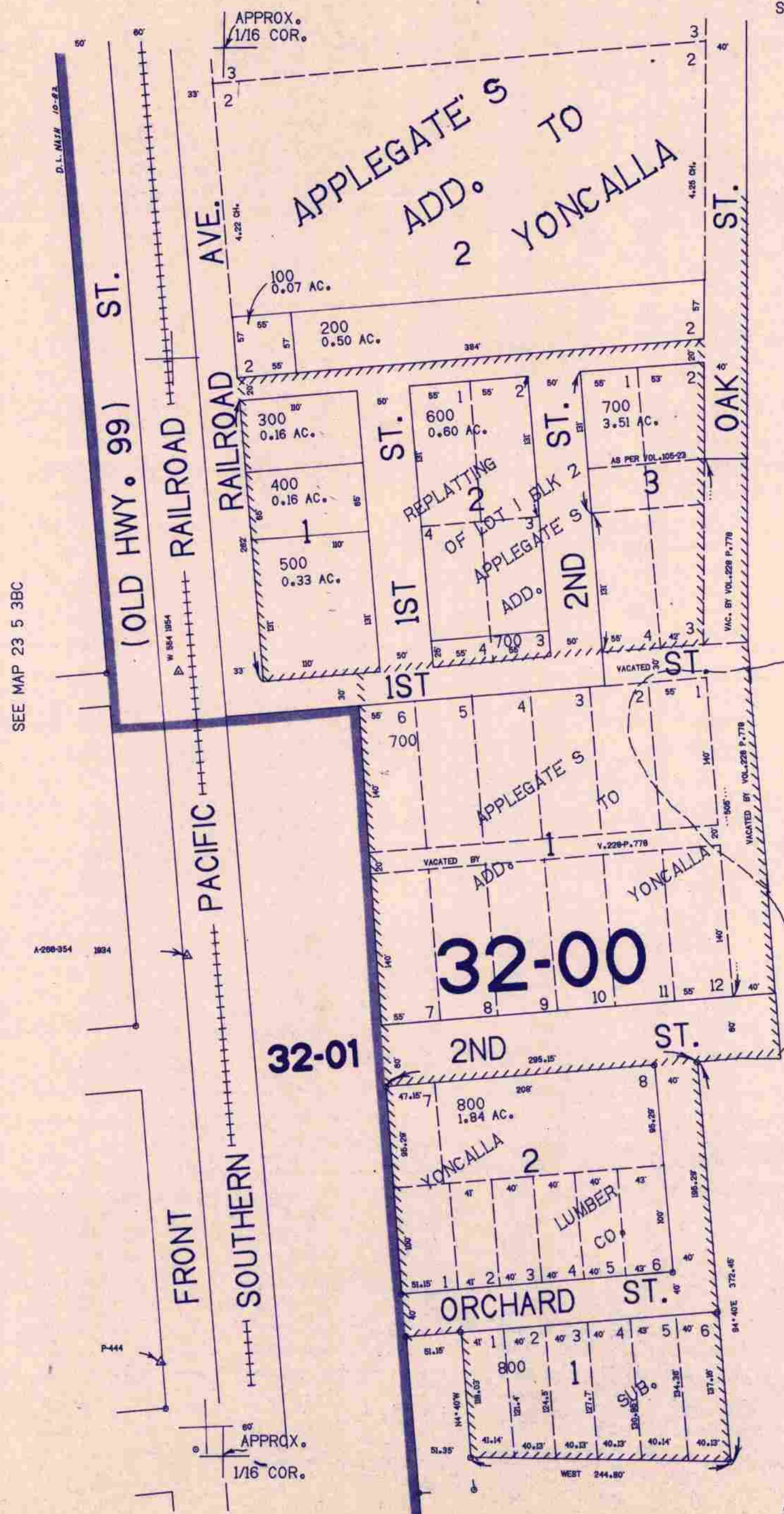
23 5 3BD

THIS MAP WAS PREPARED FOR
ASSESSMENT PURPOSE ONLY.

1"=100'

SEE MAP 23 5 3

APPROX.
1/16 COR.



SEE MAP 23 5 3

POND

716.500

APPROX.
CEN. SEC.

SEE MAP 23 5 3

1.264.500

9/23 23 5 3BD
BB