

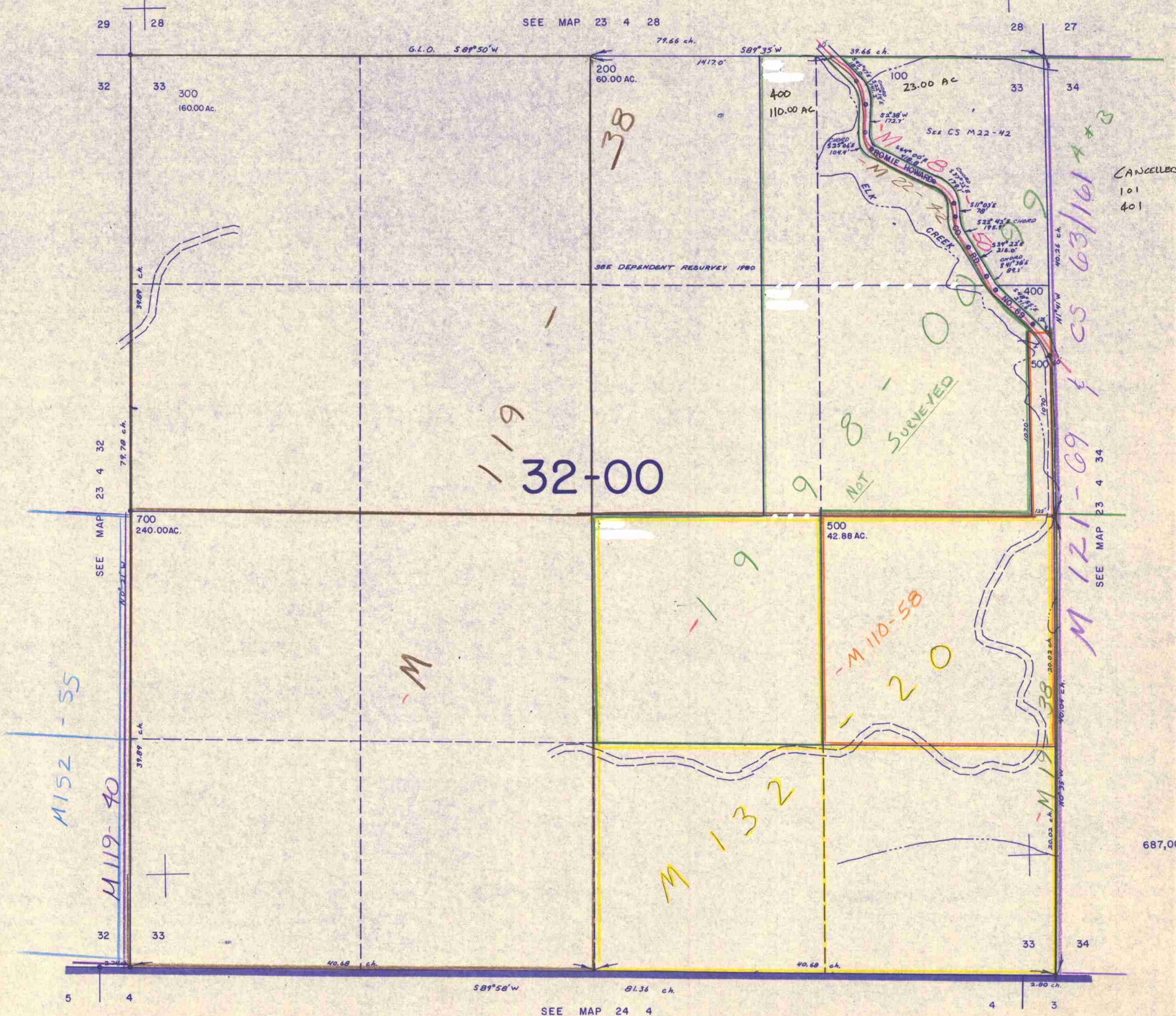
SECTION 33 T.23S. R.4W. W.M.  
DOUGLAS COUNTY

23 4 33

THIS MAP WAS PREPARED FOR  
ASSESSMENT PURPOSE ONLY.

1"=400'

SEE MAP 23 4 28



CANCELLED Nos  
101  
401

SEE MAP 23 4 34

687,000

SEE MAP 24 4

23 4 33

1,293,000

9/6/37