

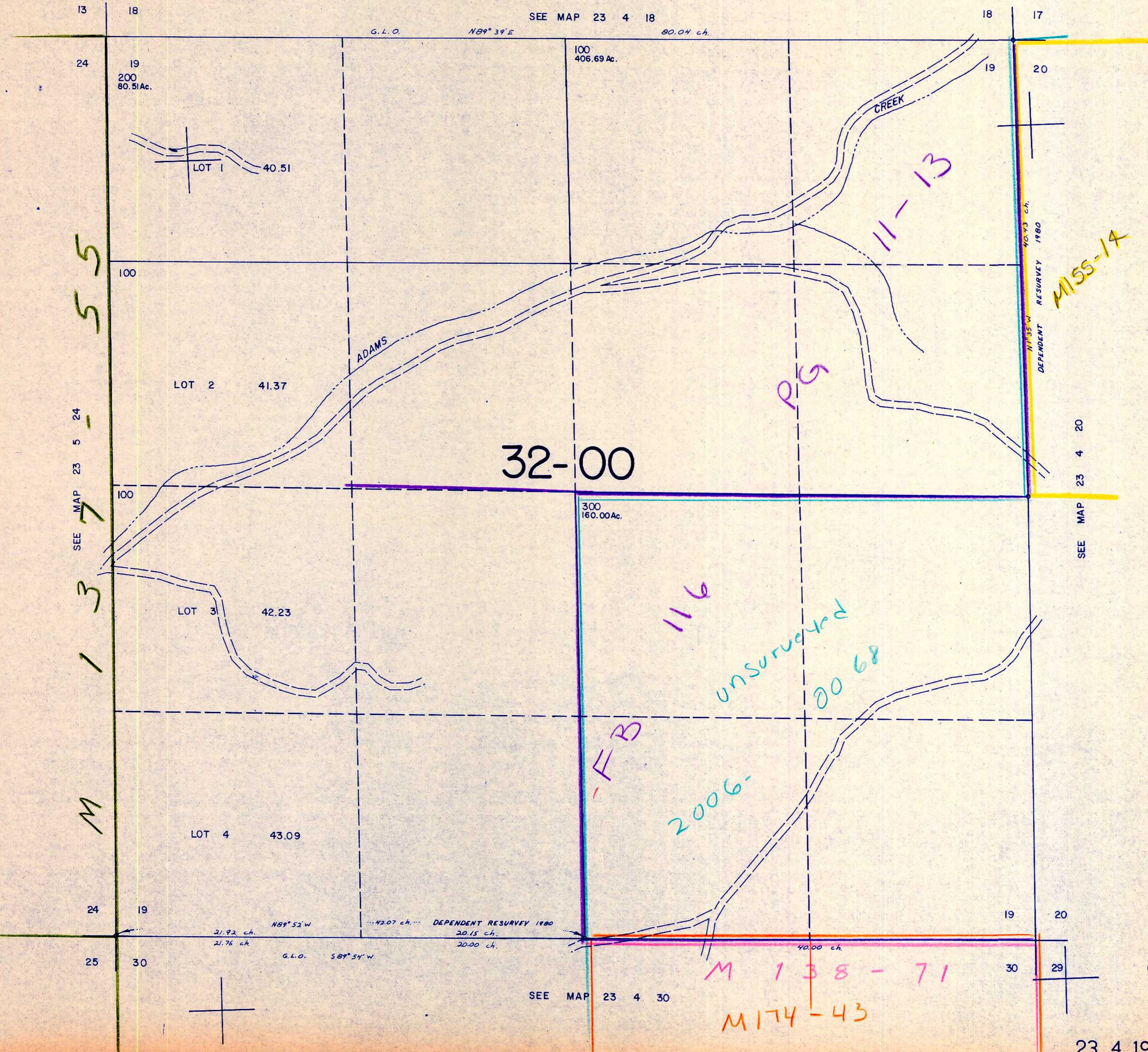
SECTION 19 T.23S. R.4W. W.M.
DOUGLAS COUNTY

23 4 19

THIS MAP WAS PREPARED FOR
ASSESSMENT PURPOSE ONLY.

1"=400'

SEE MAP 23 4 18



M
13
-
55

SEE MAP 23 5 24
7

24
19
25
30

32-00

F B

116

unsurveyed
0068

2006-

PG

11-13

MISS-14

M 138-71

M174-43

SEE MAP 23 4 30

SEE MAP 23 4 20

23 4 19

697,000

283,000

9/8/21