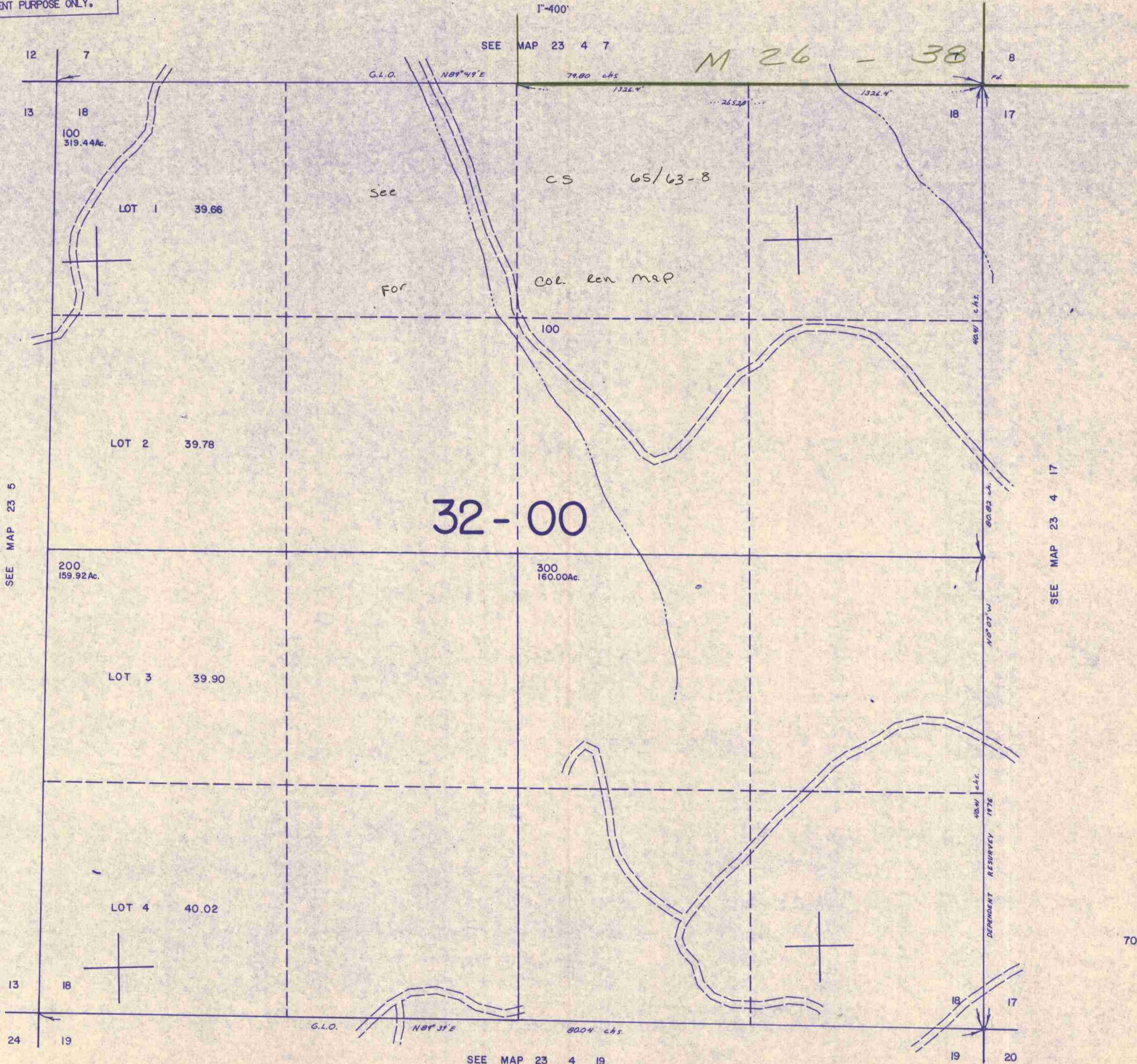


SECTION 18 T.23S. R.4W. W.M.  
DOUGLAS COUNTY

23 4 18

THIS MAP WAS PREPARED FOR  
ASSESSMENT PURPOSE ONLY.



SEE MAP 23 5

SEE MAP 23 4 19

SEE MAP 23 4 17

703,000

1,282,000

23 4 18

9/10 3/11