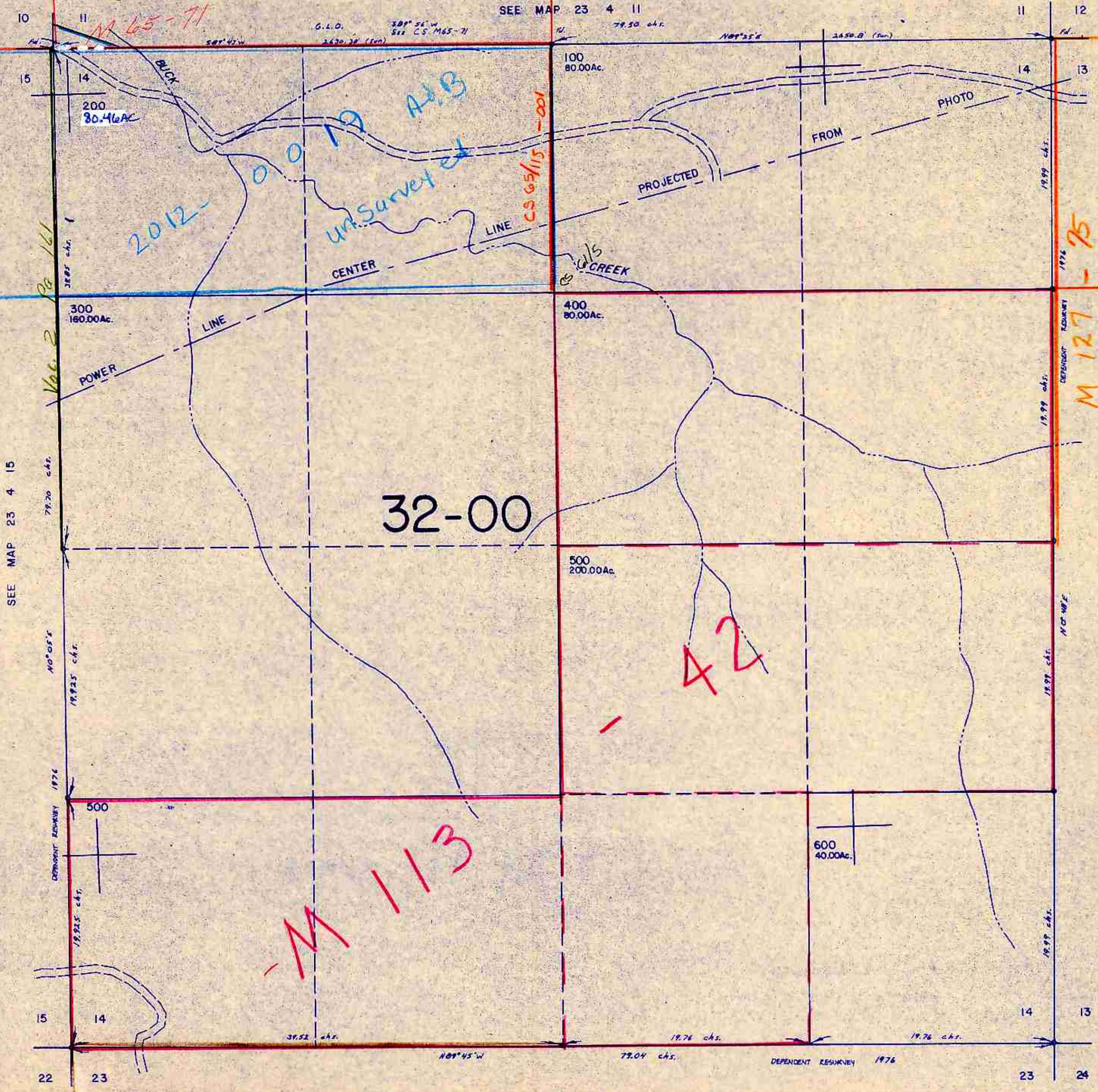


SECTION 14 T.23S. R.4W. W.M.  
DOUGLAS COUNTY

23 4 14

THIS MAP WAS PREPARED FOR  
ASSESSMENT PURPOSE ONLY.

1"=400'



SEE MAP 23 4 15

SEE MAP 23 4 13

SEE MAP 23 4

703,000

1,303,000

23 4 14

6/2/11