

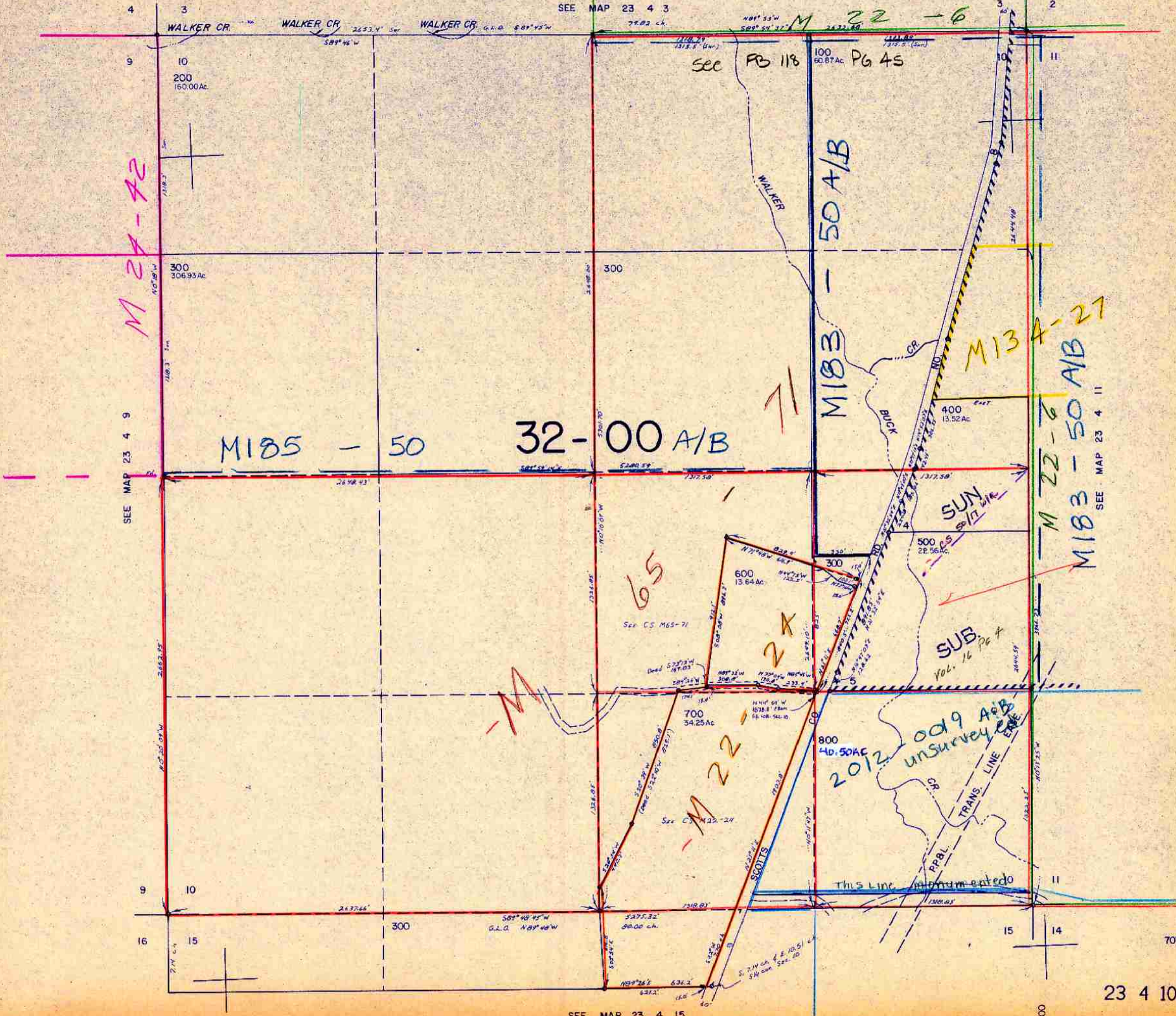
SECTION 10 T.23S. R.4W. W.M.
DOUGLAS COUNTY

23 4 10

THIS MAP WAS PREPARED FOR
ASSESSMENT PURPOSE ONLY.

1"=400'

SEE MAP 23 4 3



M 22-42

M185 - 50

32-00 A/B

M183 - 50 A/B

M134-27

M 22-6
M183 - 50 A/B

65

2X

M 22-24

2012 1009 A/B
unsurveyed

This line monumented

SEE MAP 23 4 15

23 4 10

707,000

1,299,000

8/03/11