

THIS MAP WAS PREPARED FOR ASSESSMENT PURPOSE ONLY.

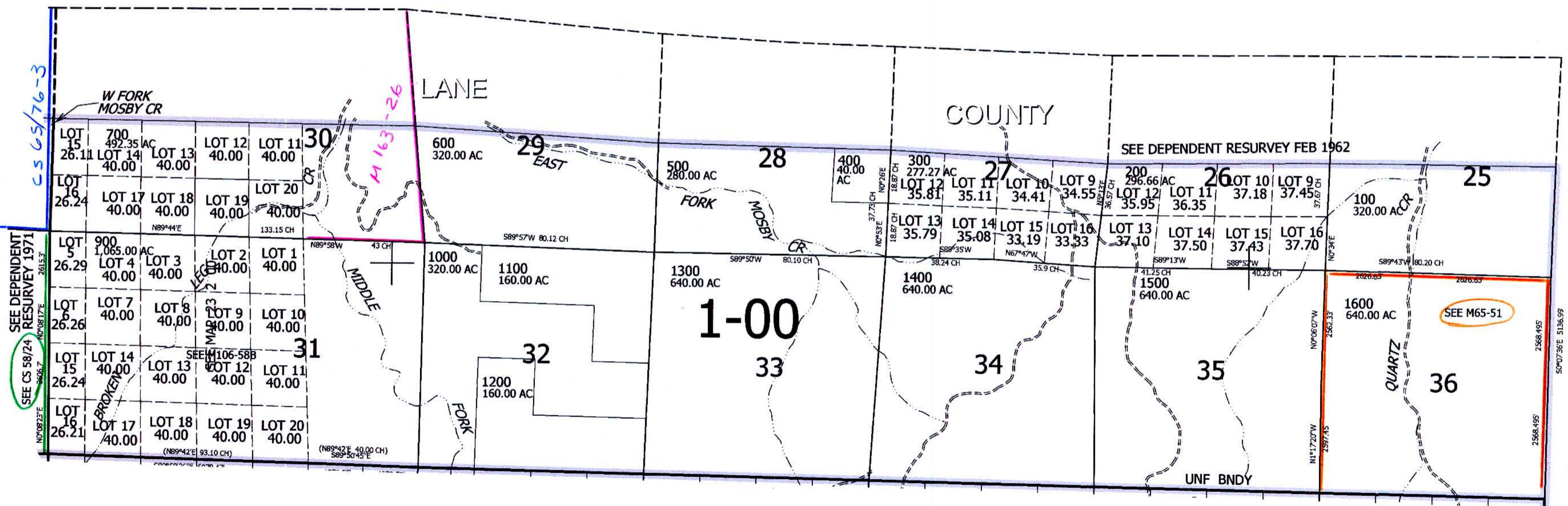
T.23S. R.1W. W.M.
DOUGLAS COUNTY
1" = 2000'

REVISED ON

23 1 00

710,000

CANCELLED NOS
500M1 700M1 1100M1
1200M1 1600M1



CS 65/76-3

SEE DEPENDENT RESURVEY 1971
NOV 08 17 E 2615.3
SEE CS 58/24
NOV 08 17 E 2615.3

M 163-26

SEE CS 64/42 for GLO Surveys

SEE MAP 24 1 00

1,320,000

23 1 00
JC 4/2018