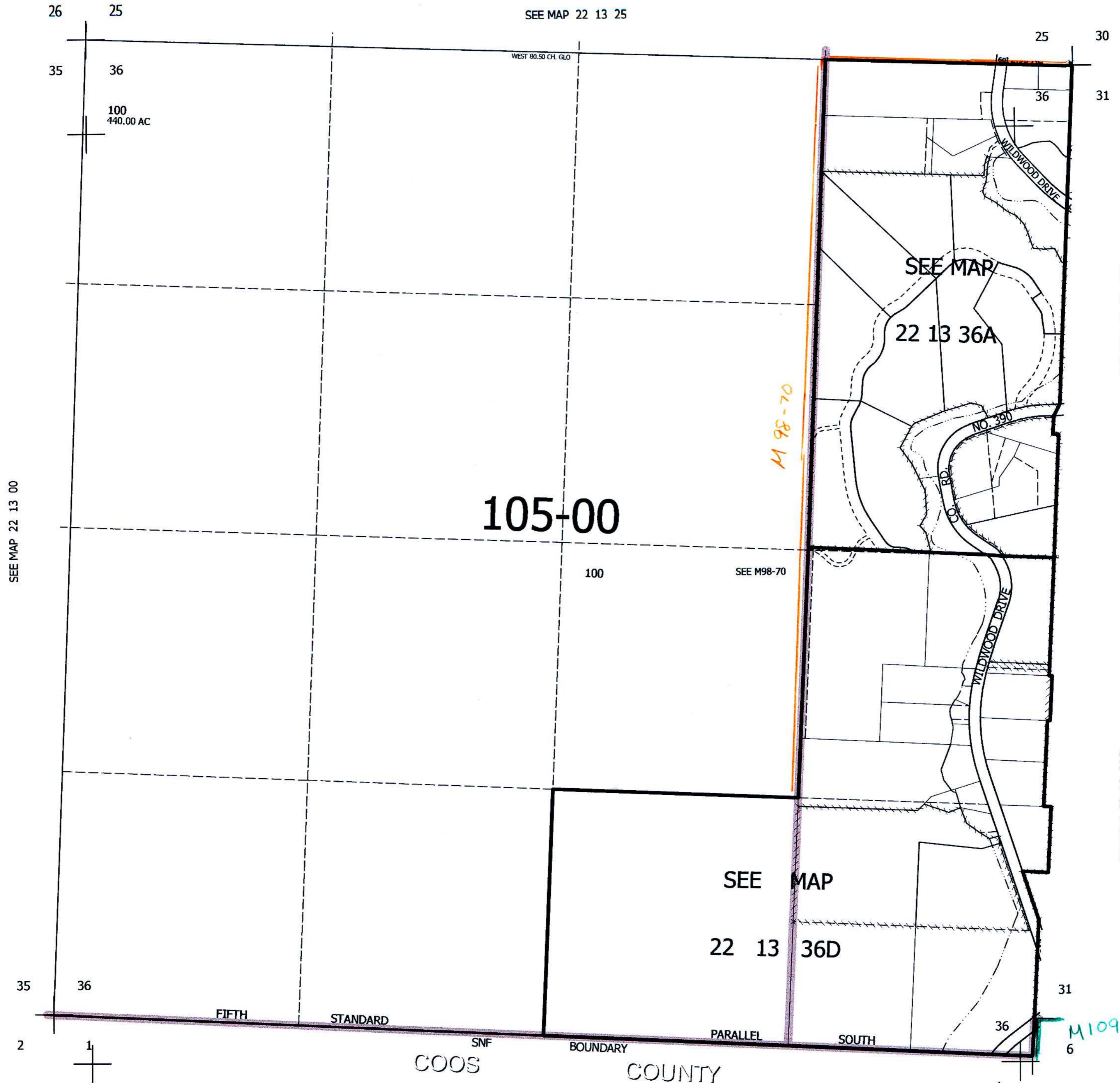


THIS MAP WAS PREPARED FOR
ASSESSMENT PURPOSE ONLY.

SEC.36 T.22S. R.13W. W.M.
DOUGLAS COUNTY
1" = 400'

REVISED ON
2-12-18

22 13 36
& INDEX



CANCELLED NOS
100M1

SEE MAP 22 12 31B

SEE MAP 22 12 31C

M 109-52

JC
2-14-18

22 13 36
& INDEX