

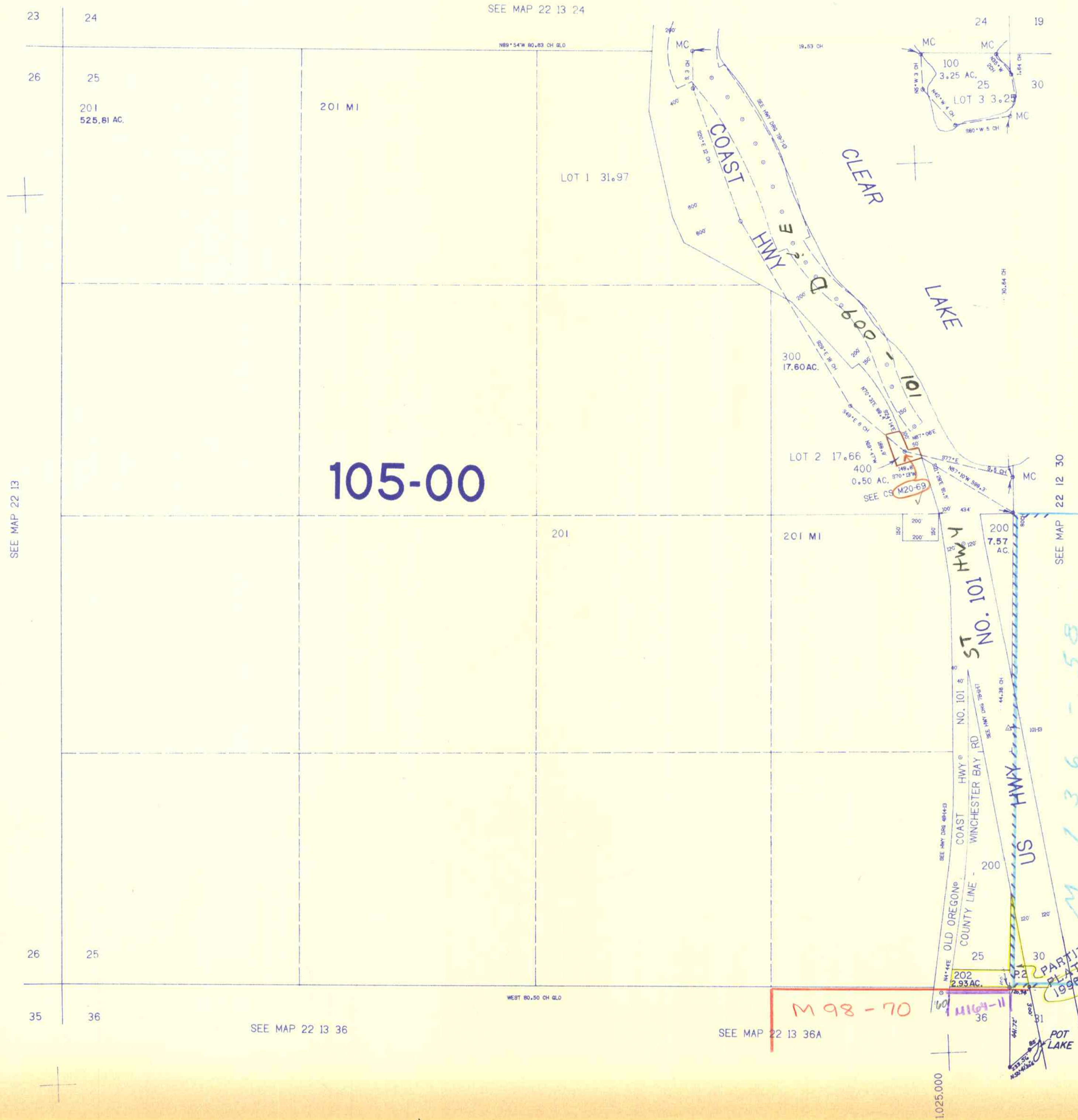
SECTION 25 T.22S. R.13W. W.M.  
DOUGLAS COUNTY

REVISED ON  
7-16-97

22 13 25

THIS MAP WAS PREPARED FOR  
ASSESSMENT PURPOSE ONLY.

1"=400'



740.000

M 136 - 58

PARTITION  
PLAT NO.  
1998-111 A & B

M 98 - 70

1025.000

22 13 25

Star