

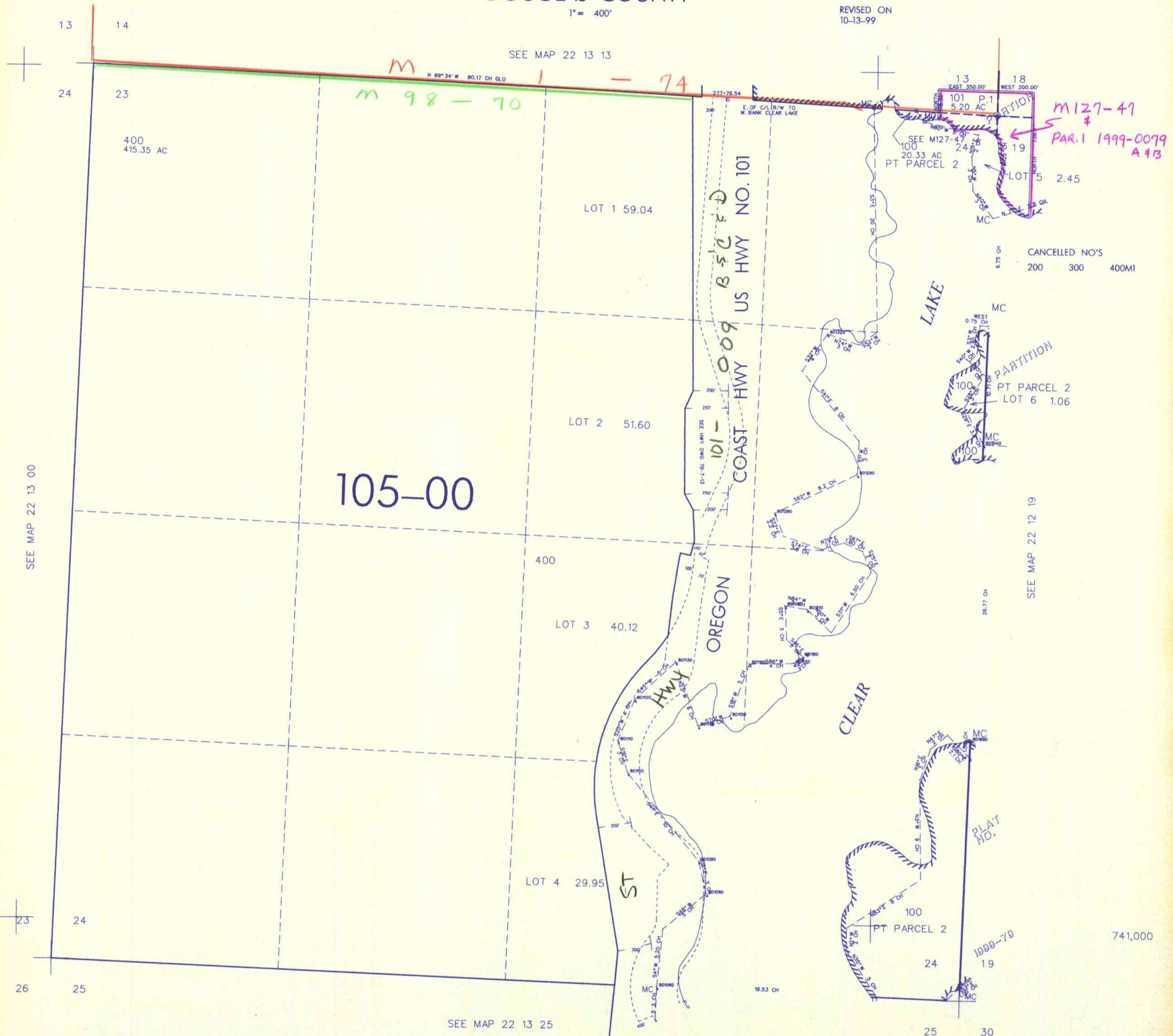
THIS MAP WAS PREPARED FOR ASSESSMENT PURPOSE ONLY

SEC. 24 T.22S. R.13W W.M. DOUGLAS COUNTY

22 13 24

1" = 400'

REVISED ON 10-13-99



SEE MAP 22 13 13

SEE MAP 22 13 00

SEE MAP 22 12 19

SEE MAP 22 13 25

CANCELLED NO'S  
200 300 400MI

3,946,000

741,000

22 13 24

4/00  
NSV