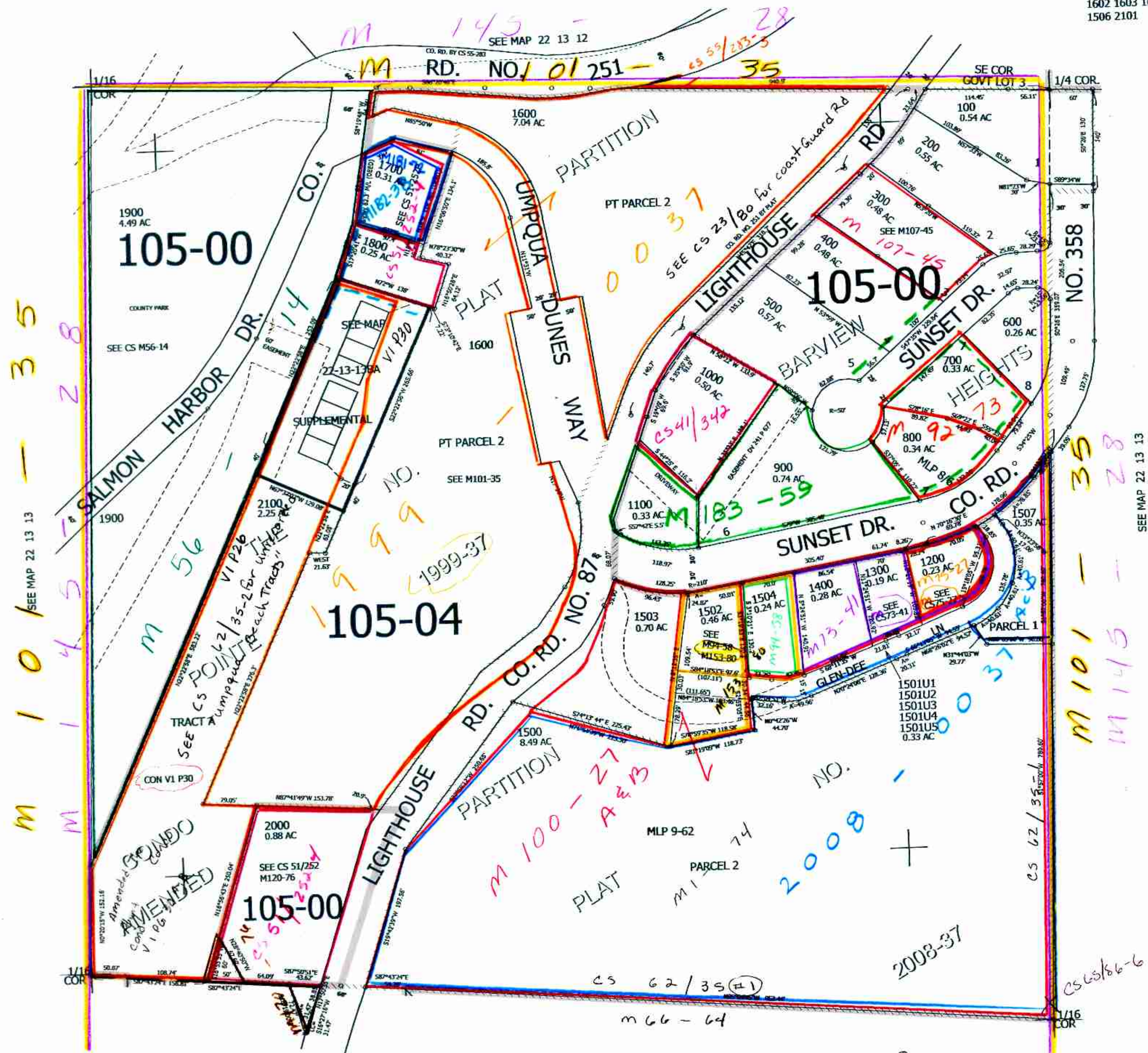


THIS MAP WAS PREPARED FOR ASSESSMENT PURPOSE ONLY.

NE1/4 NW1/4 SEC.13 T.22S. R.13W. W.M.
DOUGLAS COUNTY
1" = 100'

REVISED ON
1-5-22

CANCELLED NOS
1600A3 1600A4 1600A5
2001 1600A5 1600A1
1602 1603 1601
1506 2101



M 101-35
M 145-28

M 101-35
M 145-28

cmw
01/09/03