

THIS MAP WAS PREPARED FOR ASSESSMENT PURPOSE ONLY.

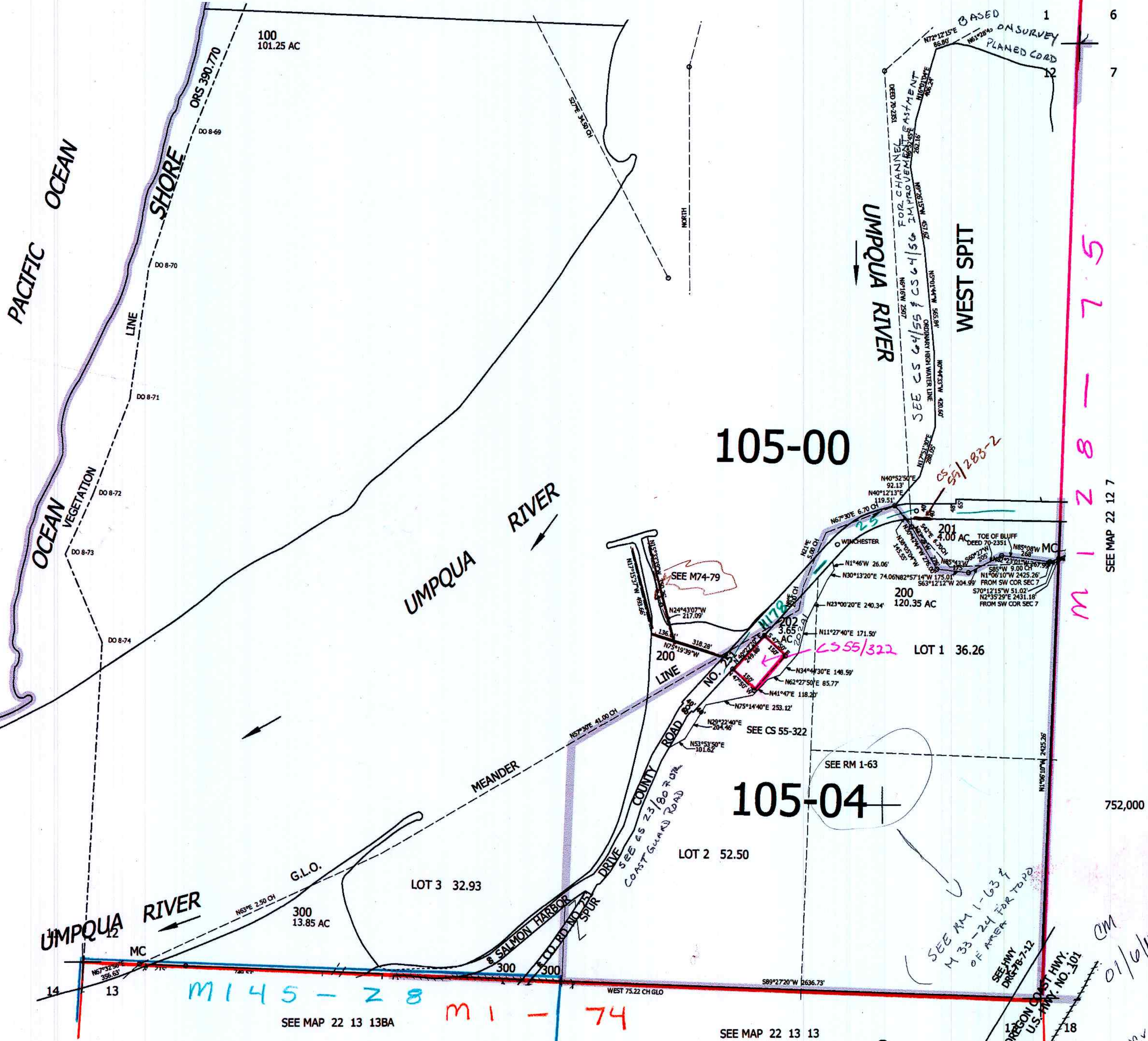
SEC.12 T.22S. R.13W. W.M.
DOUGLAS COUNTY
1" = 400'

REVISED ON
12-31-14

22 13 12

CANCELLED NOS

SEE MAP 22 13 1



105-00

105-04

1
6
7

SEE MAP 22 12 7

752,000

SEE MAP 22 13 14

M145-28

M1-74

22 13 12

SEE RM 1-63
SEE HWY 1-63
M 33-24 FOR TOP
OF RIVER
SEE HWY 1-63
DIR 78-7-12
OREGON COAST HWY
U.S. HWY. NO. 301

CM
01/6/15

22

3,946,000

SEE MAP 22 13 13

SEE MAP 22 13 13BA

