

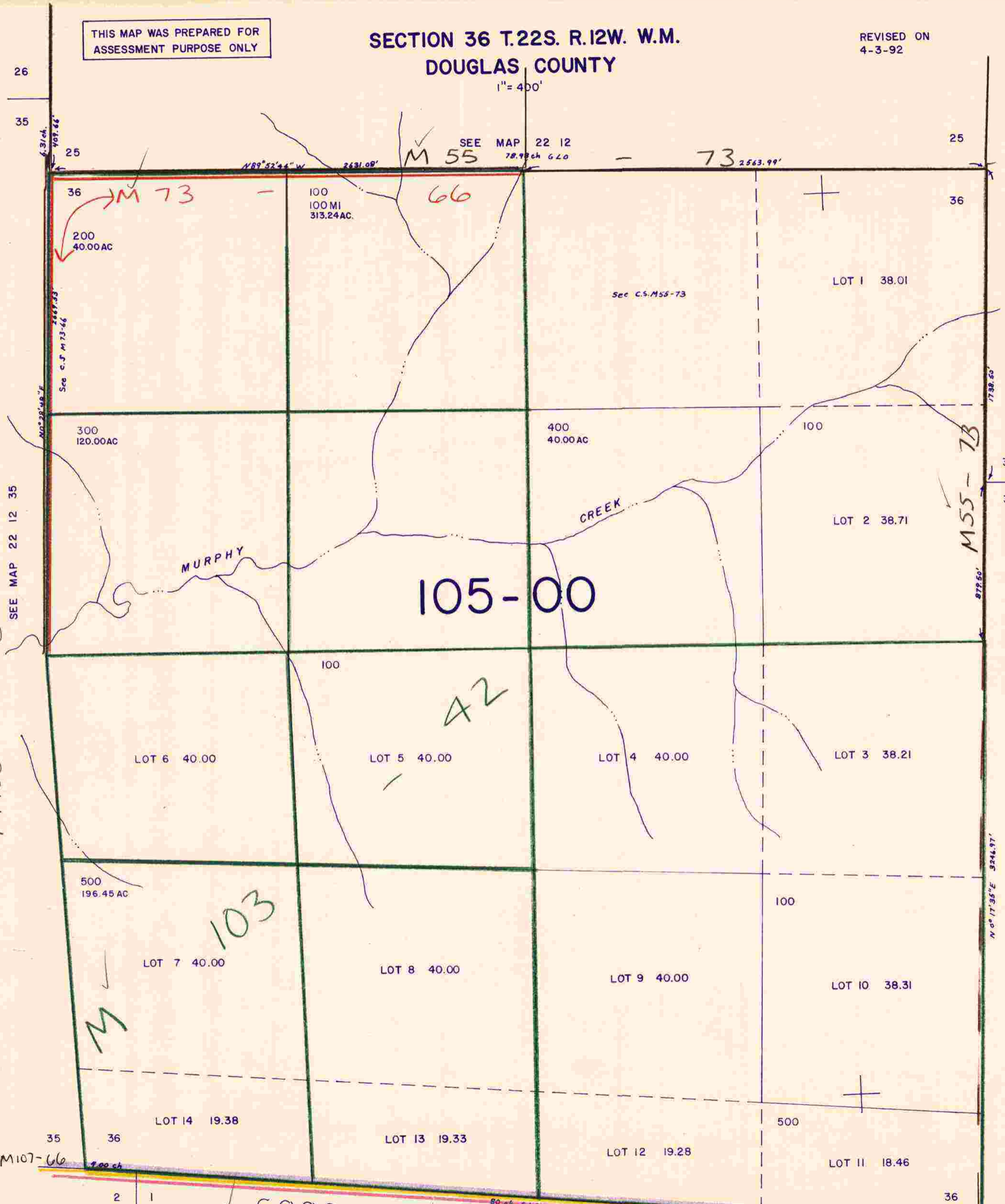
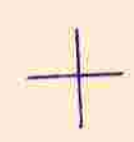
THIS MAP WAS PREPARED FOR ASSESSMENT PURPOSE ONLY

SECTION 36 T.22S. R.12W. W.M.
DOUGLAS COUNTY

REVISED ON
4-3-92

22 12 36

1" = 400'



M 100 - 38

M

103

105-00

42

M 55

M 73

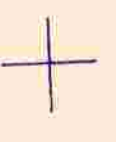
M 114 - 75

C.S. COOS

58/37-1

DOUGLAS COUNTY

M 107-66



SEE MAP 22 11

SEE MAP 22 12 35

729,000

22 12 36

N.S.
4/92