

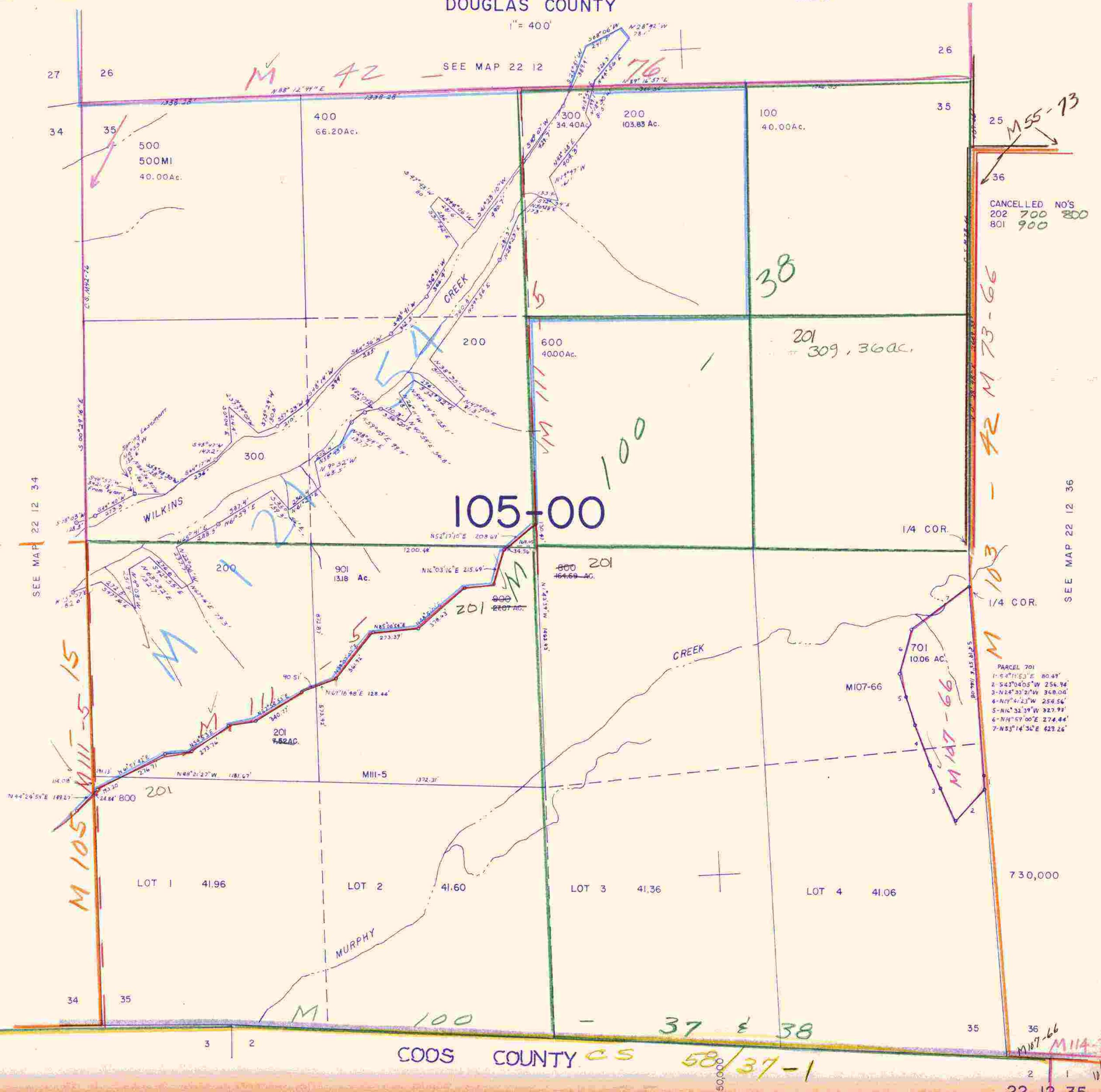
THIS MAP WAS PREPARED FOR ASSESSMENT PURPOSE ONLY

SECTION 35 T.22S. R.12W. W.M. DOUGLAS COUNTY

REVISED ON 10-2-91

22 12 35

1" = 400'



CANCELED NO'S	NO'S
202	700
801	900
	800

PARCEL 701

1-54°11'53"E 80.49'
2-543°04'05"W 256.94'
3-N24°23'21"W 340.04'
4-N14°41'23"W 254.56'
5-N14°32'39"W 327.99'
6-N4°57'00"E 274.44'
7-N53°14'30"E 429.26'

COOS COUNTY

M 107-66 M 114-75

22 12 35