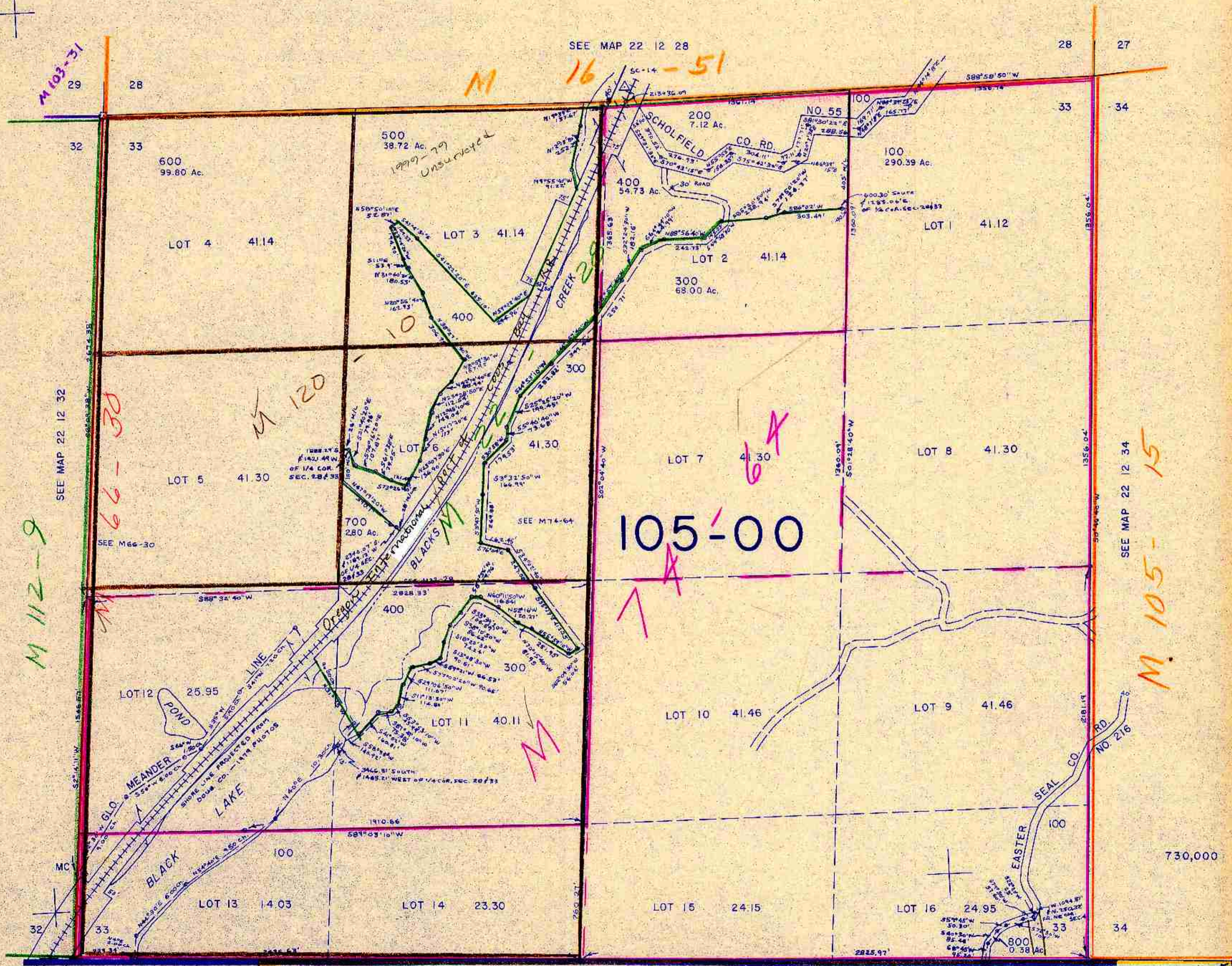


SECTION 33 T.22S. R.12W. W.M.  
DOUGLAS COUNTY

22 12 33

THIS MAP WAS PREPARED FOR  
ASSESSMENT PURPOSE ONLY.

1"=400'



M 103-31

M 16 - 51

M 112-9

66-30

M 120

105-00

M 105-15

C.S. 55/172 & C.S. 58/37  
COOS COUNTY

1,040,000

22 12 33

2/83