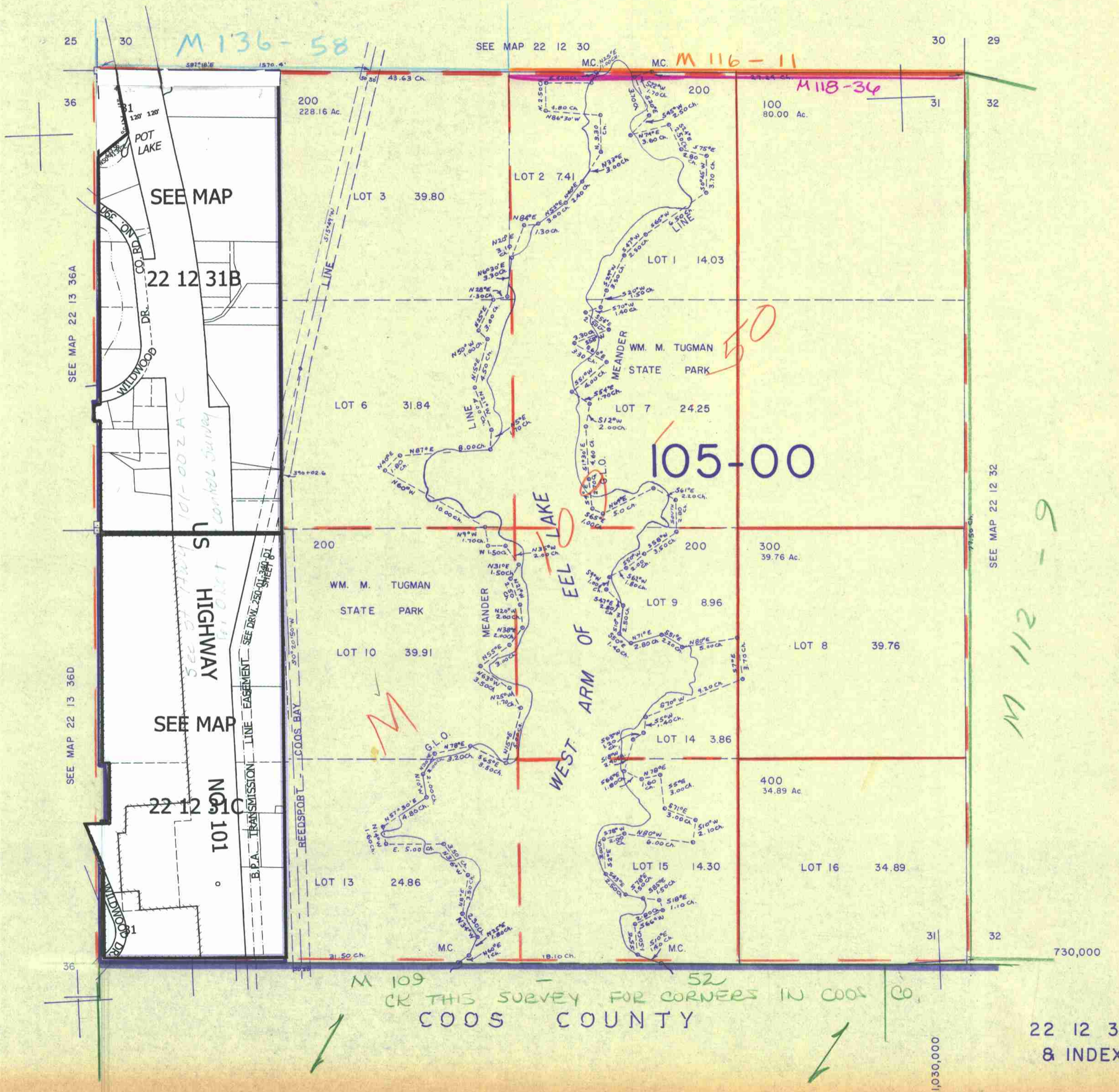


THIS MAP WAS PREPARED FOR ASSESSMENT PURPOSE ONLY

SECTION 31 T.22S. R.12W. W.M.  
DOUGLAS COUNTY

1" = 400'

22 12 31  
& INDEX



M 109 - 52  
CR THIS SURVEY FOR CORNERS IN COOS CO.  
COOS COUNTY

22 12 31  
& INDEX

2/10/31