

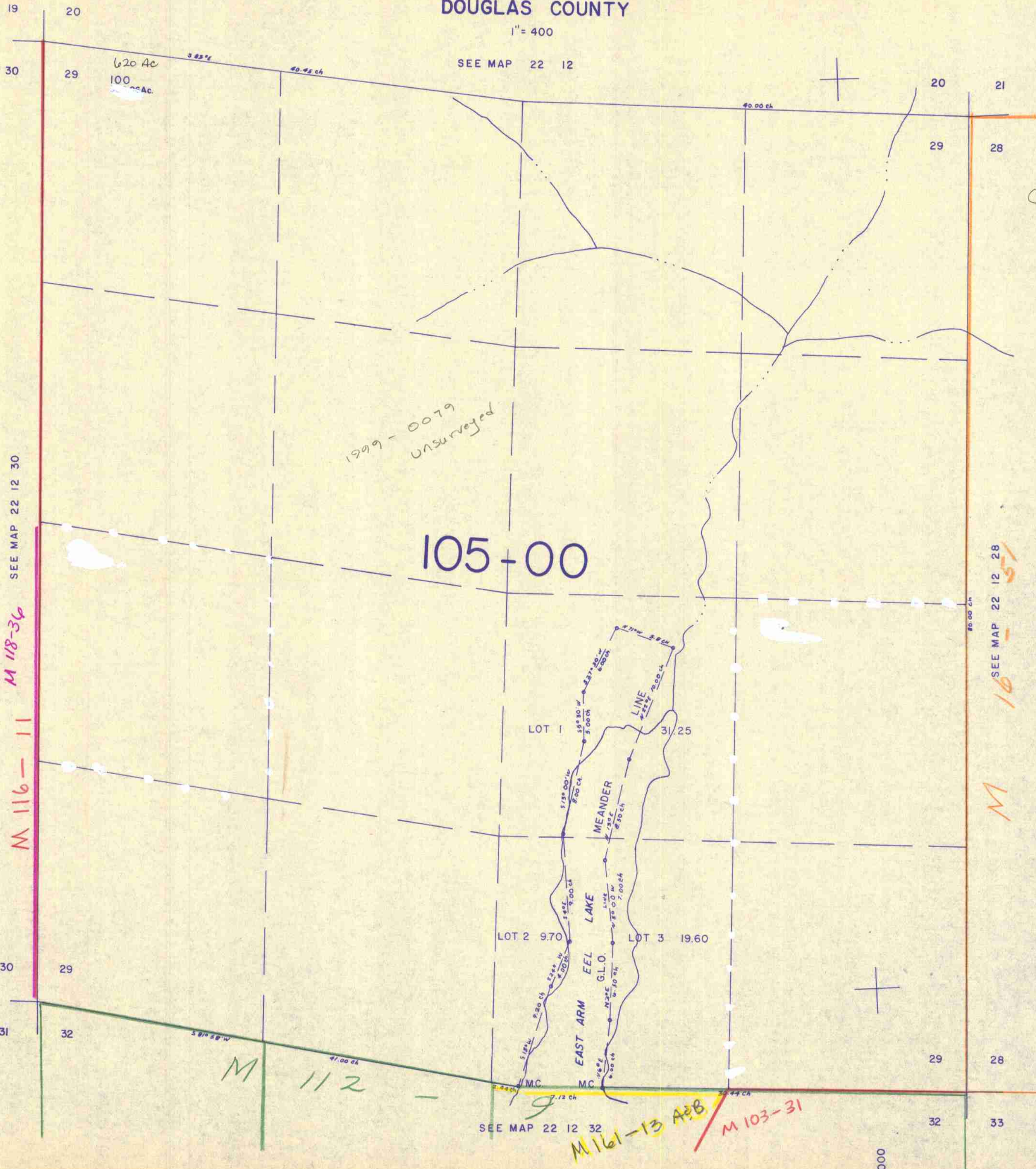
THIS MAP WAS PREPARED FOR ASSESSMENT PURPOSE ONLY.

SECTION 29 T.22S. R.12W. W.M.  
DOUGLAS COUNTY

22 12 29

1" = 400'

SEE MAP 22 12



735,000

SEE MAP 22 12 32

1,035,000

22 12 29

2/83/R