

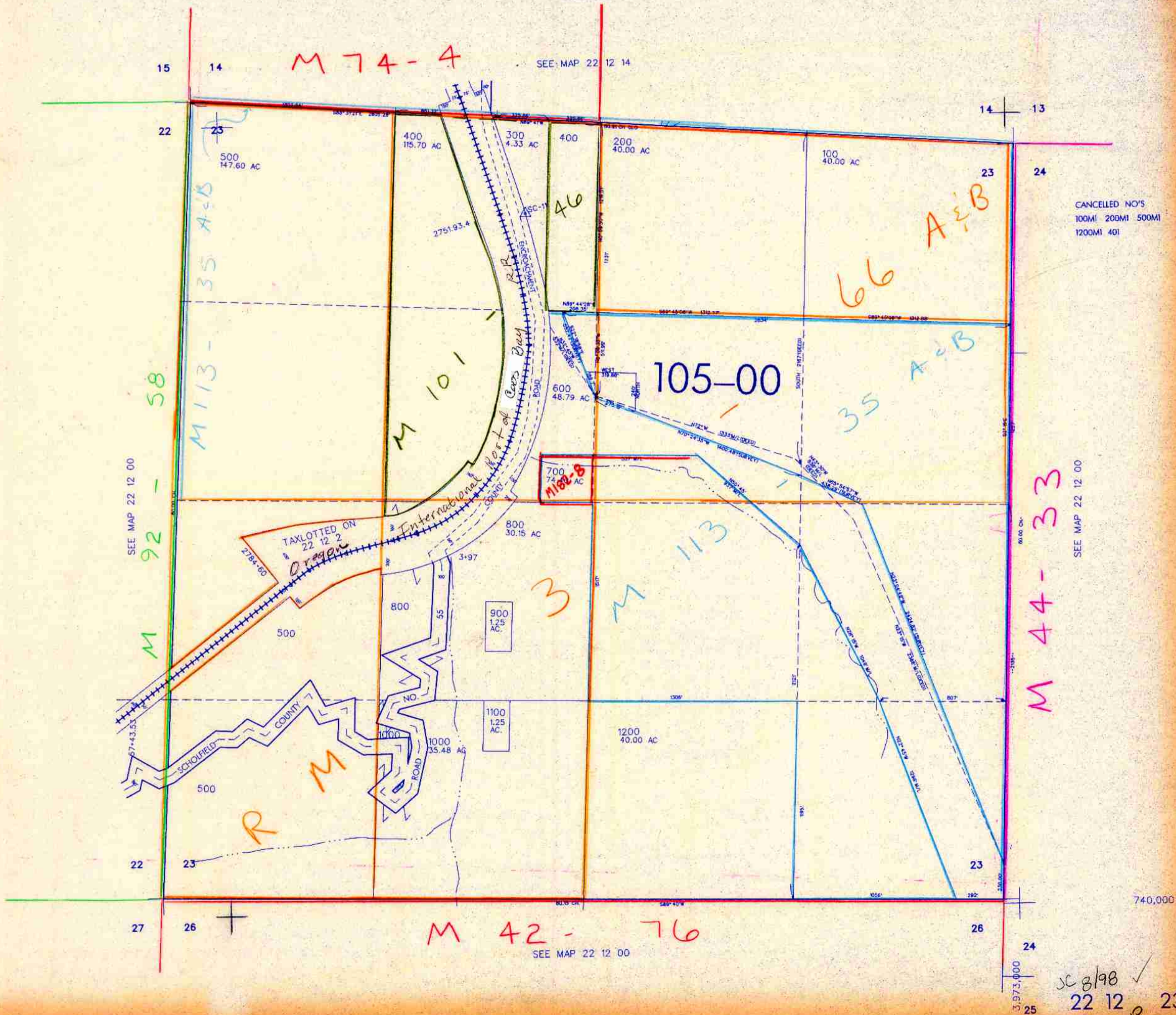
THIS MAP WAS PREPARED FOR
ASSESSMENT PURPOSE ONLY

SEC. 23 T.22S. R.12W W.M.
DOUGLAS COUNTY

REVISED ON
7-6-98

22 12 23

1" = 400'



CANCELLED NO'S
100MI 200MI 500MI
1200MI 401

SEE MAP 22 12 00

740,000

3,973,000
25

JC 8/98 ✓
22 12 23
SP