

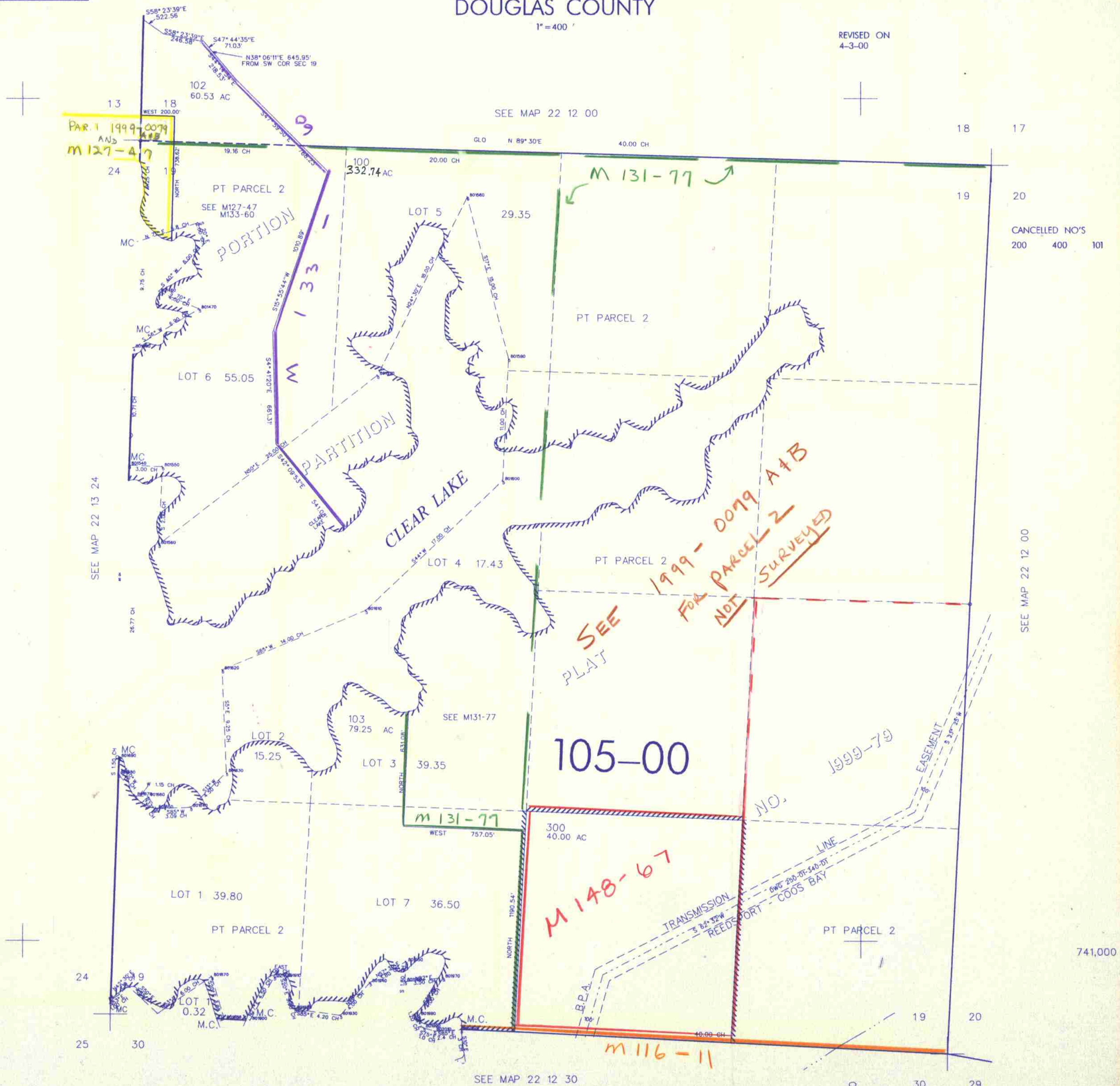
THIS MAP WAS PREPARED FOR ASSESSMENT PURPOSE ONLY

SEC. 19 T.22S. R.12W W.M.  
DOUGLAS COUNTY

22 12 19

1" = 400'

REVISED ON 4-3-00



PAR. 1 1999-0079  
AND  
M127-47

M 131-77

SEE  
PLAT  
1999-0079 A+B  
FOR PARCEL 2  
NOT SURVEYED

105-00

M 148-67

M 116-11

CANCELLED NO'S  
200 400 101

22 12 19

4/18/00 llw

3,951,000

741,000

SEE MAP 22 12 30

SEE MAP 22 13 24

SEE MAP 22 12 00

SEE MAP 22 12 00