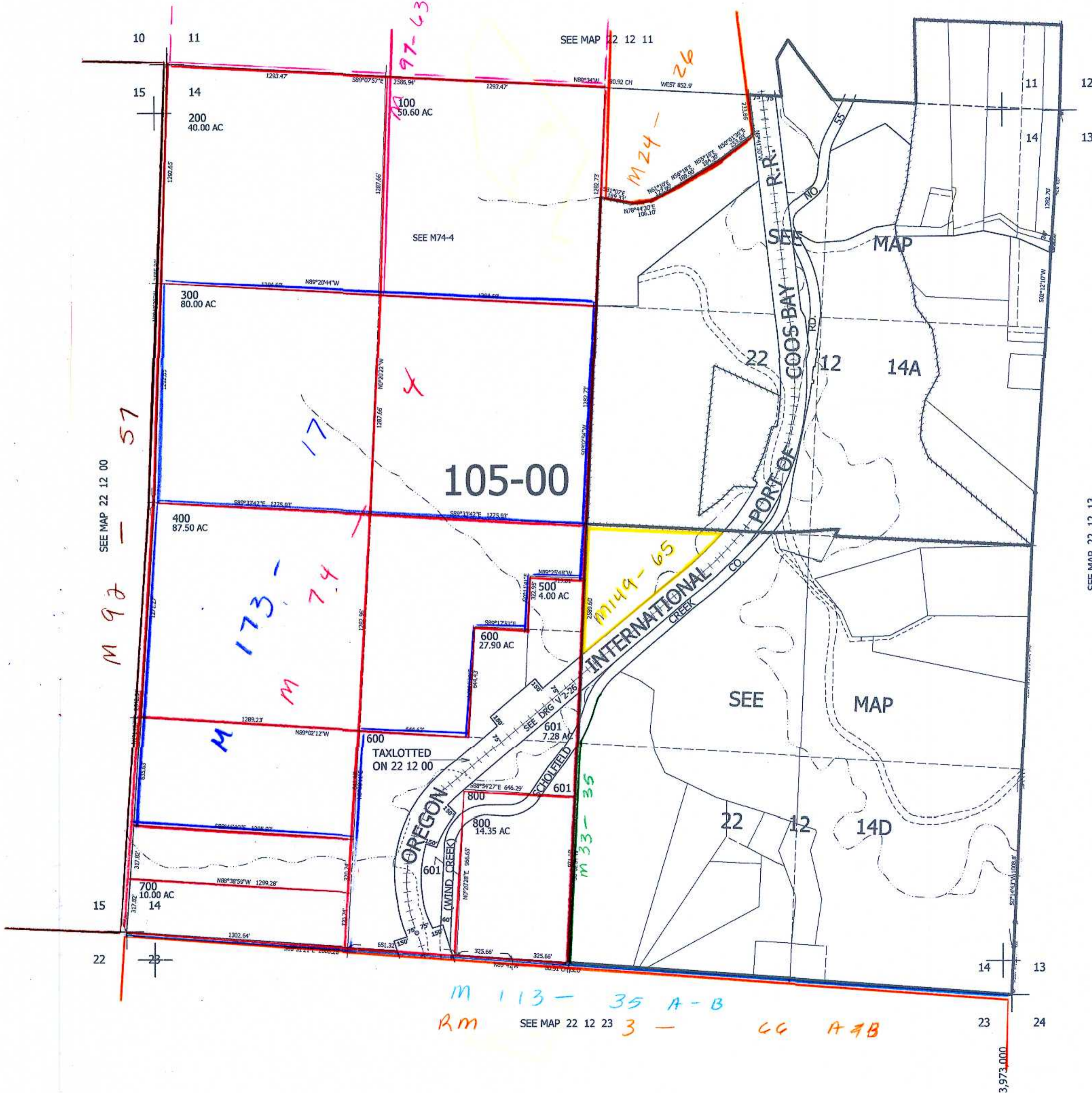


THIS MAP WAS PREPARED FOR ASSESSMENT PURPOSE ONLY.

SEC.14 T.22S. R.12W. W.M.
DOUGLAS COUNTY
1" = 400'

REVISED ON
8-11-10

22 12 14
& INDEX



CANCELLED NOS
200M1

SEE MAP 22 12 13

745,000

one of 1910
see
22 12 14
& INDEX