

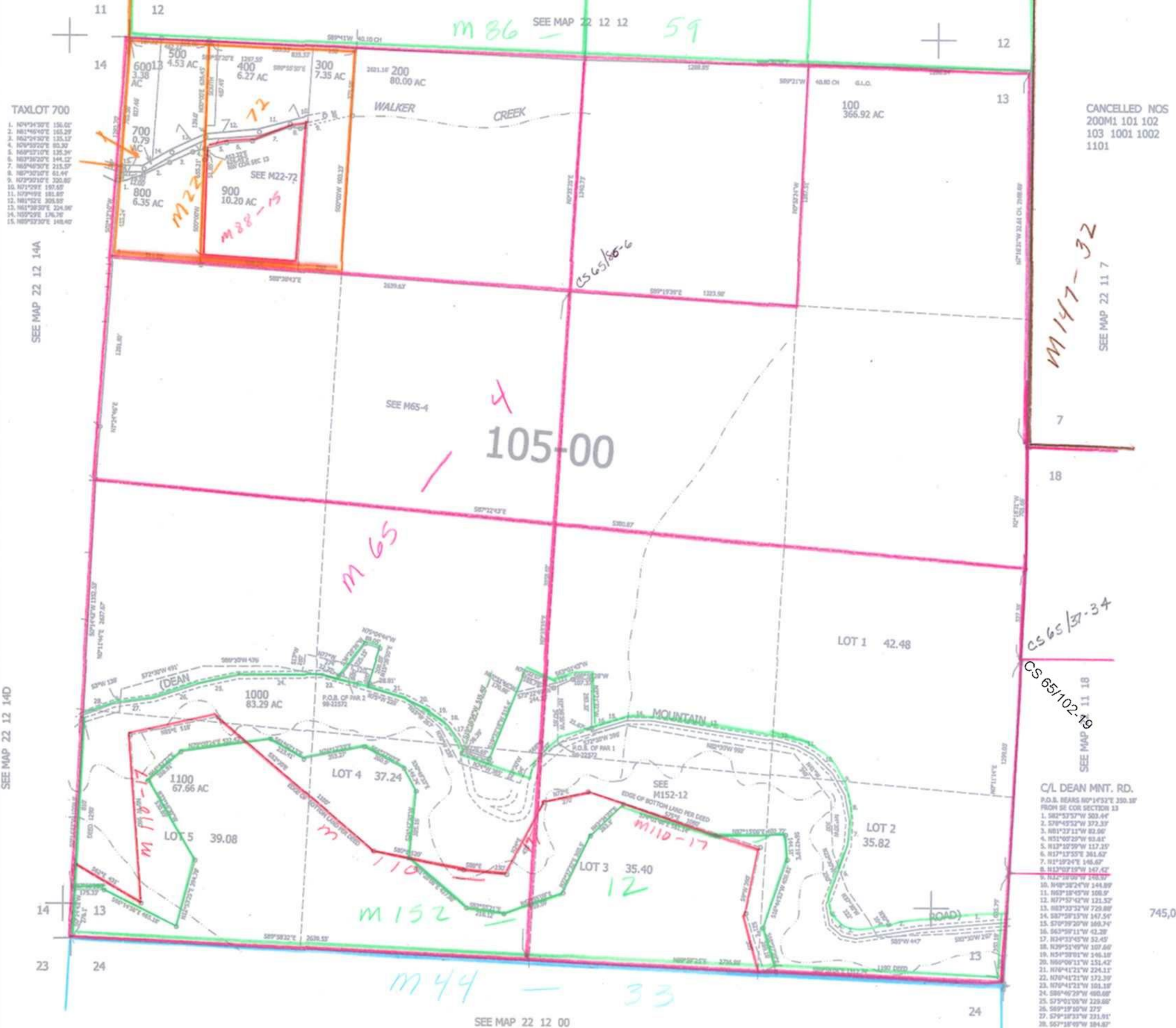
THIS MAP WAS PREPARED FOR ASSESSMENT PURPOSE ONLY.

SEC.13 T.22S. R.12W. W.M.
DOUGLAS COUNTY

REVISED ON
2-6-07

22 12 13

1" = 400'



TAXLOT 700

1. N0°43'30"E 156.00'
2. N01°46'07"E 165.29'
3. N02°24'30"E 135.12'
4. S09°32'20"E 80.30'
5. N09°23'10"E 125.34'
6. N03°36'20"E 144.12'
7. N09°46'30"E 215.57'
8. N07°30'10"E 61.44'
9. S07°30'10"E 200.80'
10. S07°29'20"E 195.60'
11. S07°49'20"E 185.60'
12. N01°52'20"E 204.90'
13. N01°38'30"E 224.90'
14. N05°02'20"E 176.70'
15. N09°32'30"E 148.40'

SEE MAP 22 12 14A

SEE MAP 22 12 14D

M 86 - SEE MAP 22 12 12 59

CANCELLED NOS
200M1 101 102
103 1001 1002
1101

M 147 - 32
SEE MAP 22 11 7

105-00

M 65

M 110-17

M 110-17

M 152

M 44 - 33

CS 65/37-34

CS 65/102-19

- C/L DEAN MNT. RD.
P.O.B. BEARS N0°45'22"E 350.10'
FROM SE COR SECTION 13
1. S02°53'57"W 503.44'
 2. S70°45'52"W 372.33'
 3. N01°22'11"W 82.00'
 4. N01°00'20"W 83.84'
 5. N33°10'20"W 117.23'
 6. N17°17'55"E 361.62'
 7. N1°10'24"E 146.67'
 8. N12°07'19"W 167.67'
 9. N32°18'00"W 148.97'
 10. N08°38'24"W 144.89'
 11. N07°18'45"W 108.9'
 12. N77°57'42"W 121.52'
 13. N03°32'32"W 729.80'
 14. S07°09'13"W 147.54'
 15. S70°39'20"W 188.24'
 16. S63°09'11"W 43.20'
 17. N04°23'45"W 52.45'
 18. N09°51'49"W 107.66'
 19. N04°28'01"W 146.18'
 20. N00°00'11"W 151.42'
 21. N10°41'21"W 224.11'
 22. N20°41'21"W 172.39'
 23. N20°41'21"W 101.18'
 24. S00°46'29"W 480.80'
 25. S73°01'08"W 223.80'
 26. S09°18'10"W 279'
 27. S70°18'33"W 231.81'
 28. S07°18'49"W 184.80'

745,000

3,978,000

JC
2/20/07
22 12 13