

SE1/4 SEC. 11 T.22S. R.12W. W.M.  
DOUGLAS COUNTY

22 12 11D

THIS MAP WAS PREPARED FOR  
ASSESSMENT PURPOSE ONLY.

1"=200'

M 33-29

SEE MAP 22 12 11A

M84-50  
M87-49  
1/4 COR.

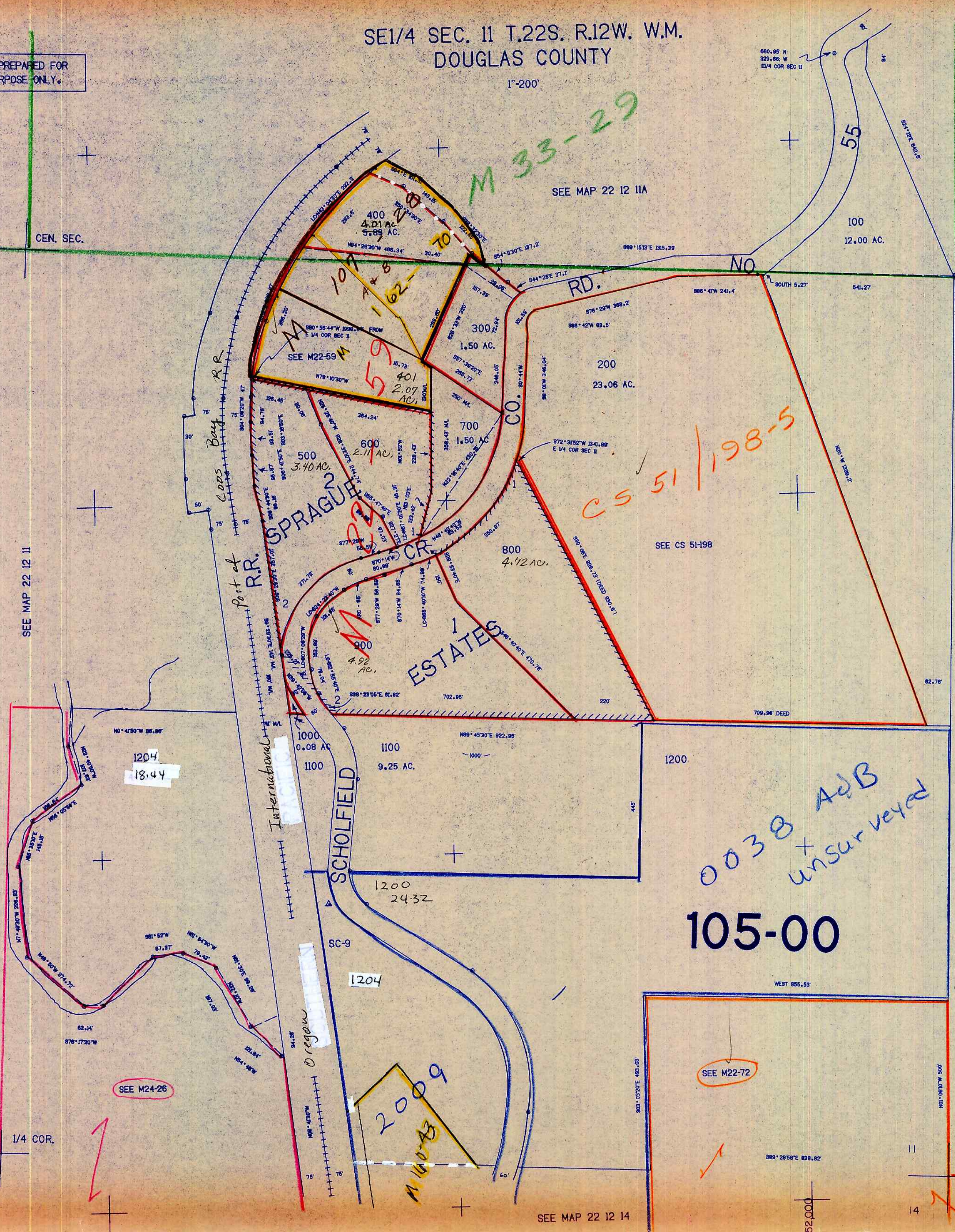
Cancelled #s  
1201  
1202  
1203

CS 51/198-5

0038 A+B  
unsurveyed

105-00

2009  
M 100-8



SEE MAP 22 12 11

SEE MAP 22 12 12

1/4 COR.

SEE MAP 22 12 14

22 12 11D

750,000 2/83