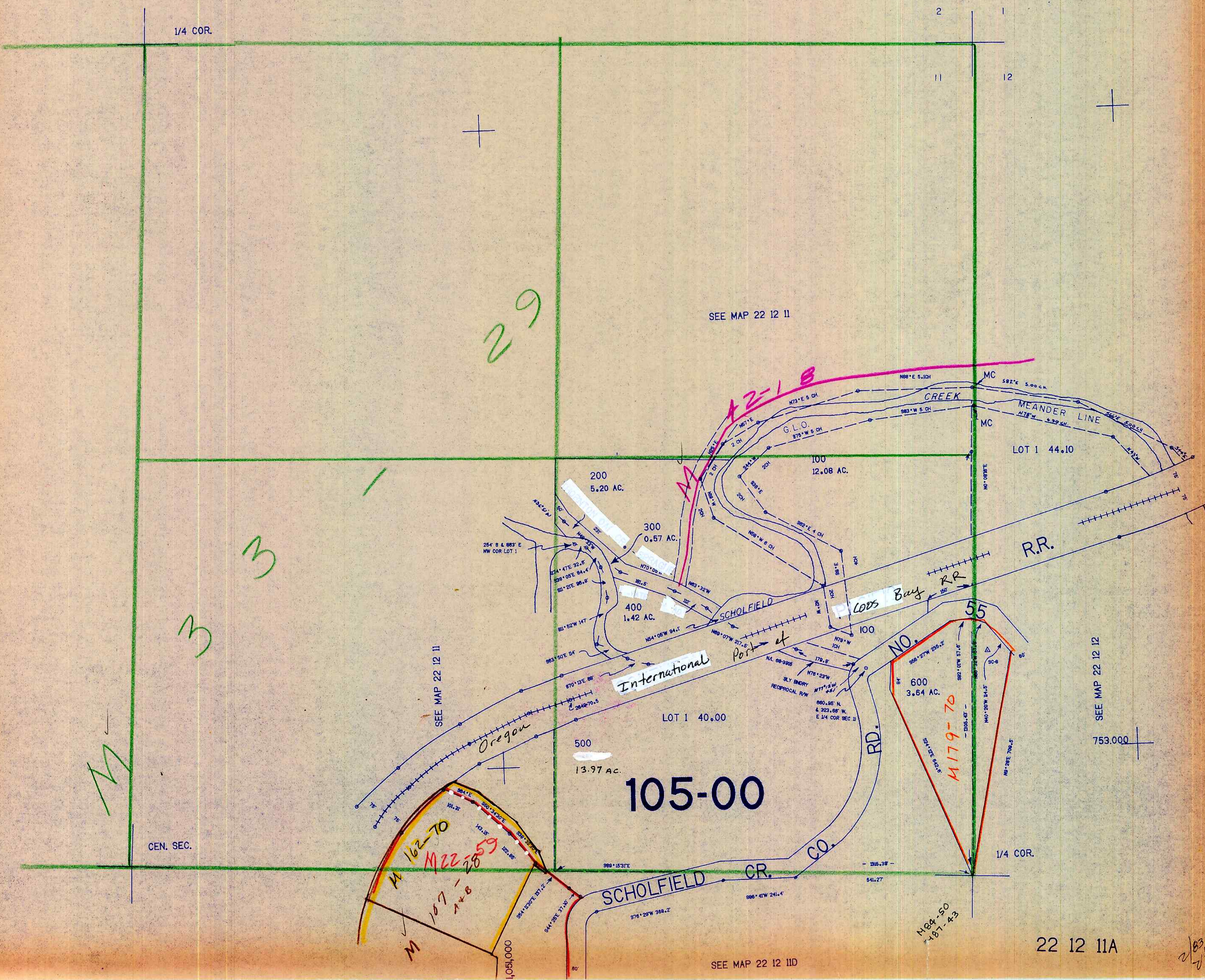


NE1/4 SEC. 11 T.22S. R.12W. W.M.
DOUGLAS COUNTY

22 12 11A

THIS MAP WAS PREPARED FOR
ASSESSMENT PURPOSE ONLY.

1"=200'



1/4 COR.

2
1
11
12

29

SEE MAP 22 12 11

3

3

M

CEN. SEC.

105-00

M 162-70
M22-59
M107-28
M107-148
M104-50
M107-43

SCHOLFIELD CR.

NO. 55
600
3.54 AC.
M179-70

SEE MAP 22 12 12

753.000

22 12 11A

SEE MAP 22 12 11D

2/83
2/8