

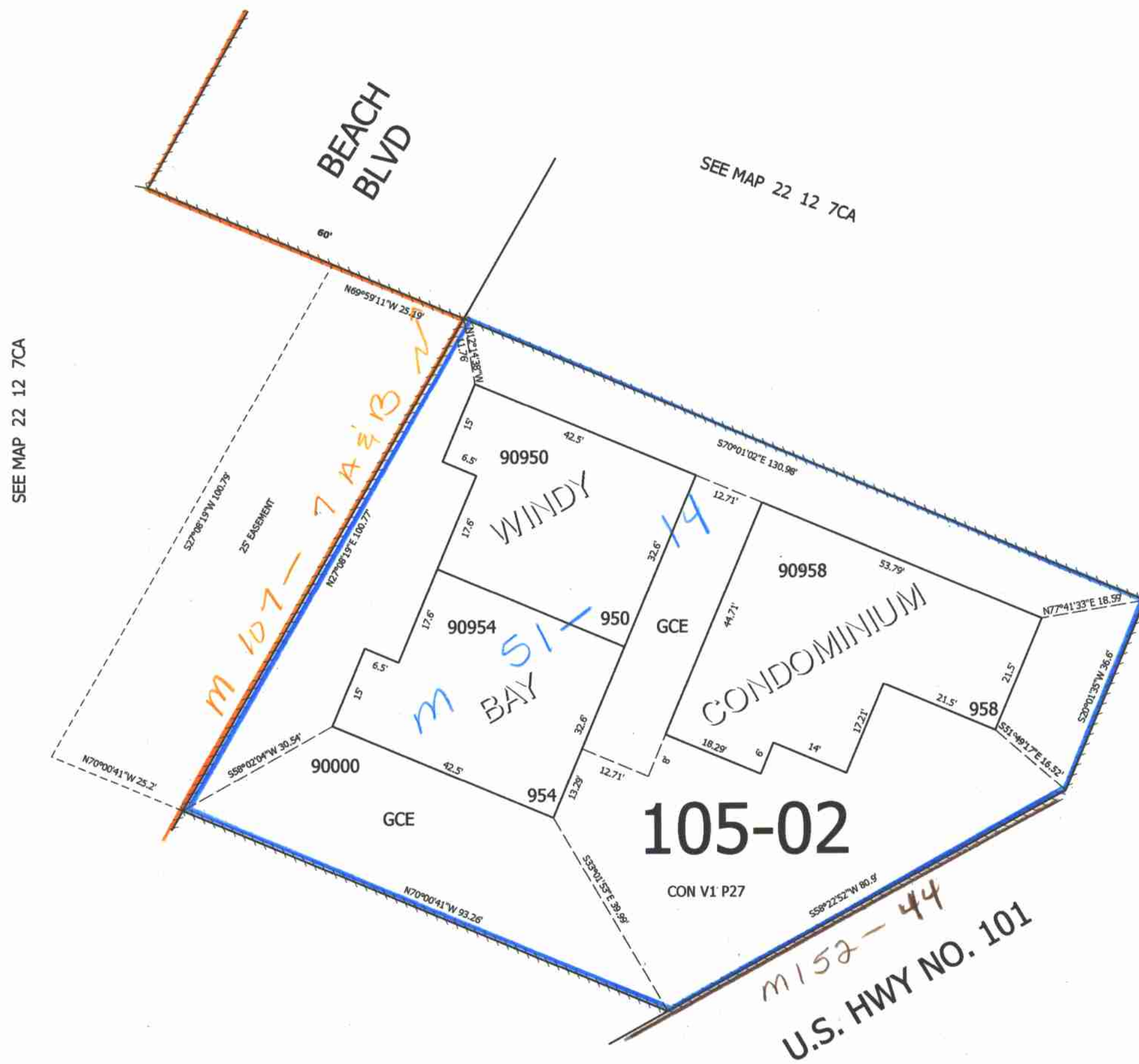
THIS MAP WAS PREPARED FOR ASSESSMENT PURPOSE ONLY.

NE1/4 SW1/4 SEC.7 T.22S. R.12W. W.M.
SUPPLEMENTAL
DOUGLAS COUNTY

1" = 20'

REVISED ON

22 12 7CA
SUPPLEMENTAL



SEE MAP 22 12 7CA

SEE MAP 22 12 7CA

22 12 7CA
SUPPLEMENTAL