

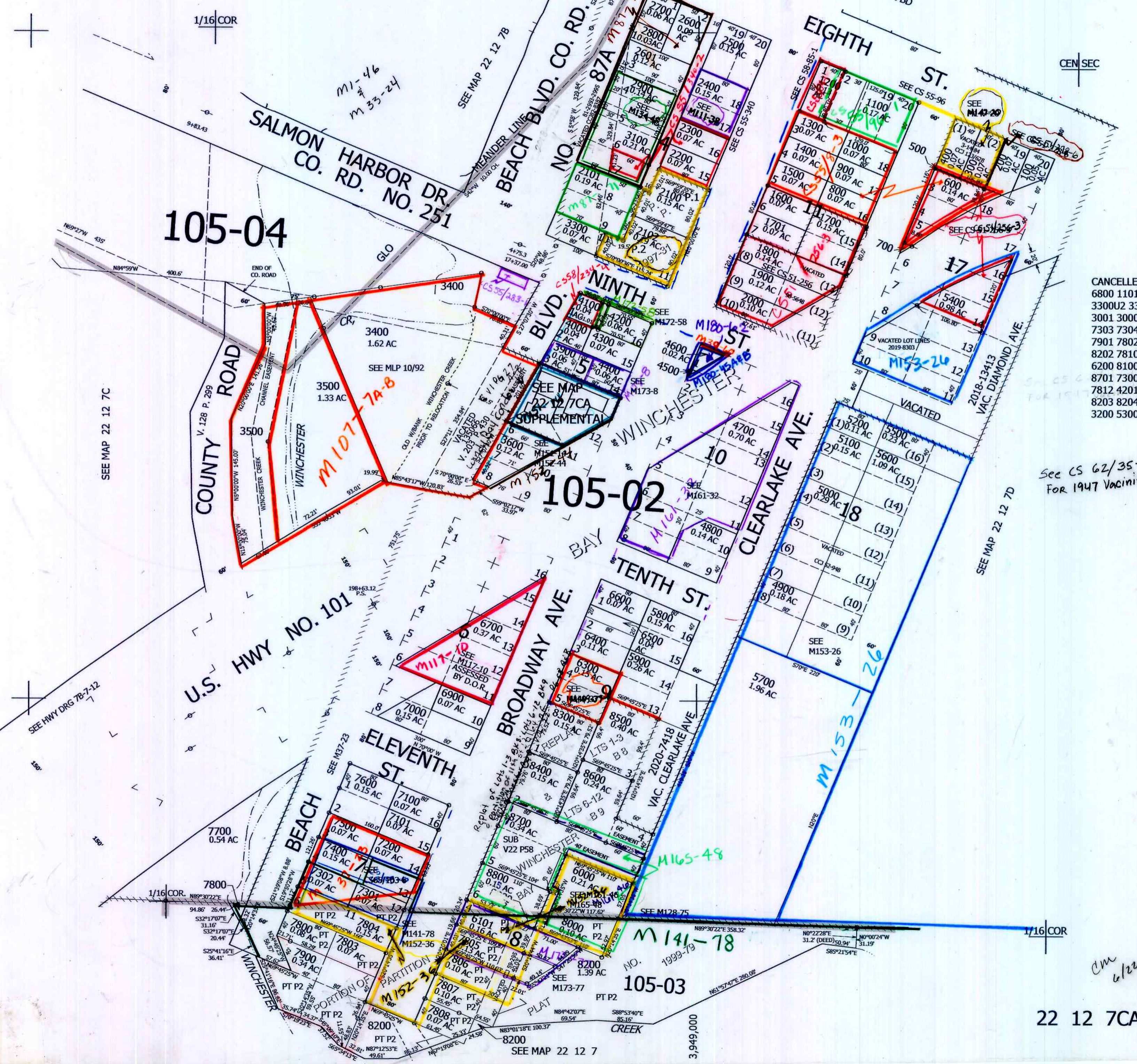
THIS MAP WAS PREPARED FOR ASSESSMENT PURPOSE ONLY.

NE1/4 SW1/4 SEC.7 T.22S. R.12W. W.M. DOUGLAS COUNTY

1" = 100'

REVISED ON 7-23-20

22 12 7CA



- CANCELLED NOS
- 6800 1101 3300U1
 - 3300U2 3300U3 3301
 - 3001 3000 7809
 - 7303 7304 3700
 - 7901 7802 8201
 - 8202 7810 6100
 - 6200 8100 3800
 - 8701 7300 7811
 - 7812 4201 3901
 - 8203 8204 7801
 - 3200 5300 8900

See CS 62/35-4 FOR 1947 VACINITY MAP

752,500

cm
6/22/07
ncw

22 12 7CA