

THIS MAP WAS PREPARED FOR ASSESSMENT PURPOSE ONLY.

SW1/4 SEC.7 T.22S. R.12W. W.M.  
DOUGLAS COUNTY  
1" = 200'

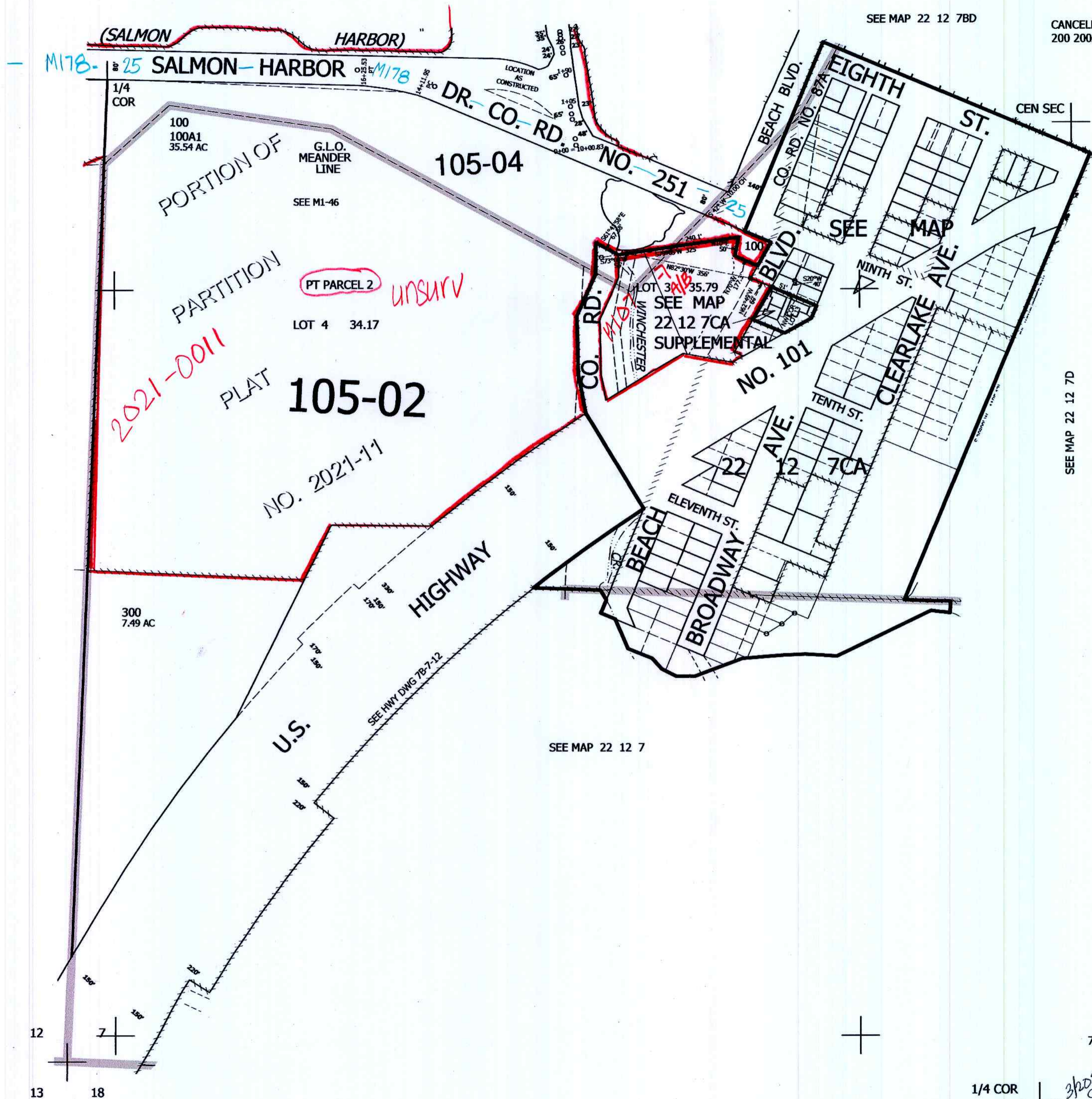
REVISED ON  
3-15-21

22 12 7C  
& INDEX

SEE MAP 22 12 7B

SEE MAP 22 12 7BD

CANCELLED NOS  
200 200A1



SEE MAP 22 13 12

SEE MAP 22 12 7D

SEE MAP 22 12 7

12  
13 18

+

751,000

1/4 COR

3/2021  
SER

22 12 7C  
& INDEX

3,949,000