

THIS MAP WAS PREPARED FOR
ASSESSMENT PURPOSE ONLY.

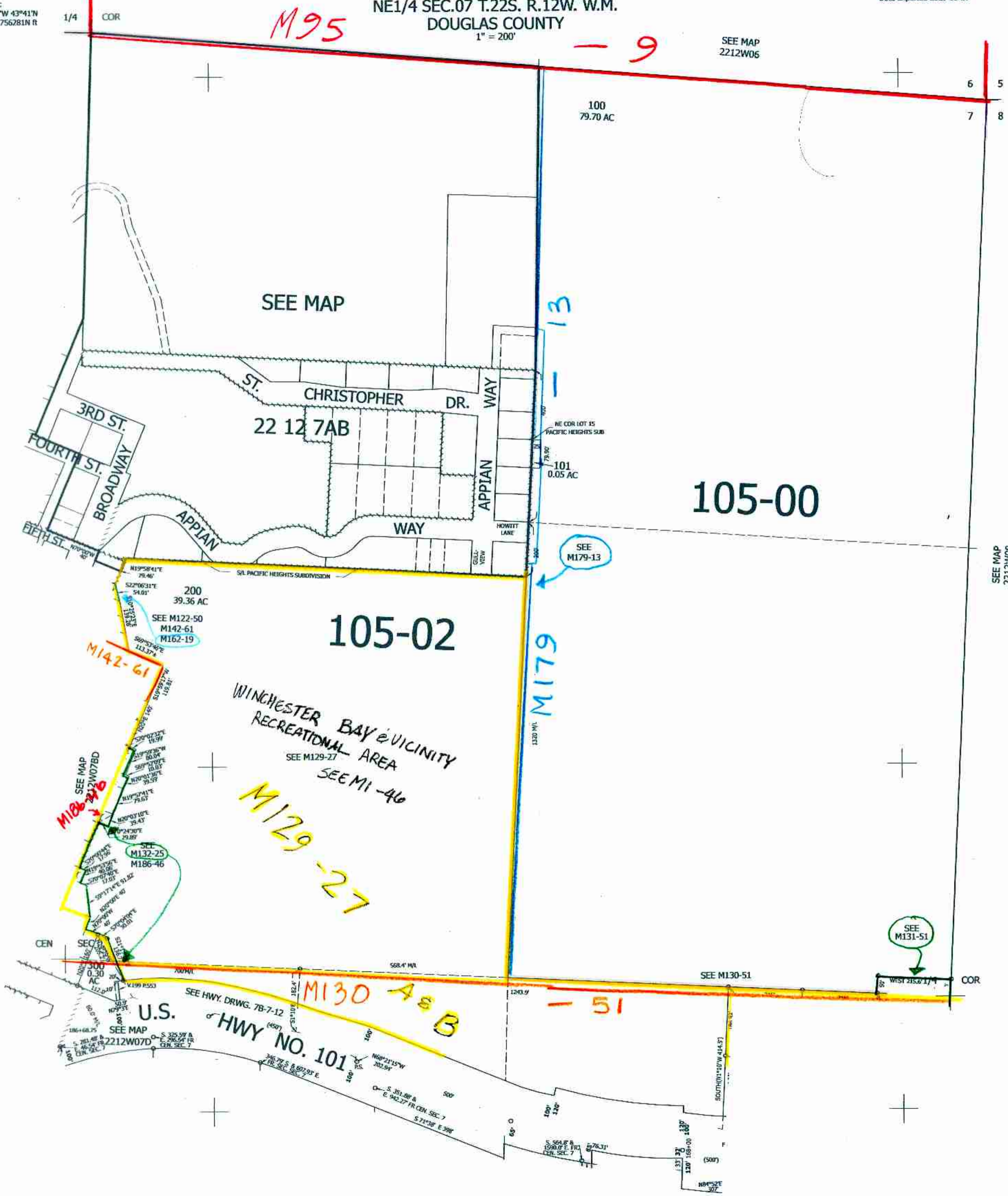
Upper Left:
124°10'38"W 43°41'N
3948876E 756281N ft

NE1/4 SEC.07 T.22S. R.12W. W.M.
DOUGLAS COUNTY
1" = 200'

1/4 COR

SEE MAP
2212W06

CANCELLED NOS:
201 202 102
203 204 205
206



12/20/25 B1

Lower Right:
124°9'42"W 43°40'26"N
3952803E 756281N ft