

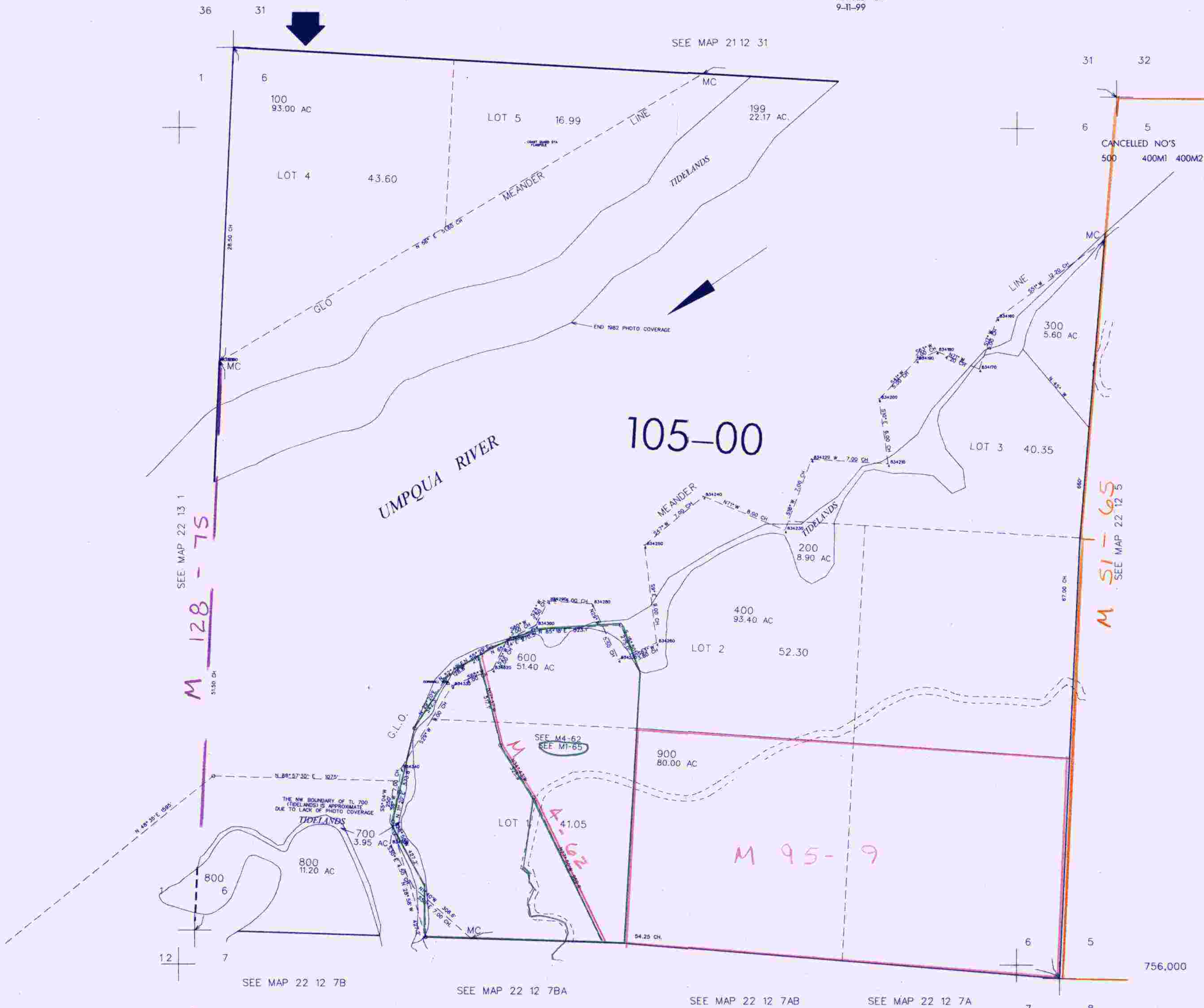
THIS MAP WAS PREPARED FOR ASSESSMENT PURPOSE ONLY

SEC. 6 T.22S. R.12W W.M. DOUGLAS COUNTY

1" = 400'

22 12 6

REVISED ON 9-11-99



SEE MAP 22 13 1
M 128-75

M 51-65
SEE MAP 22 12 5

M 95-9

SEE MAP 22 12 7B

SEE MAP 22 12 7BA

SEE MAP 22 12 7AB

SEE MAP 22 12 7A

3,952,000

22 12 6